

CEDAR HAMMOCK
COMMUNITY DEVELOPMENT DISTRICT
APRIL 23, 2019 SPECIAL MEETING

AGENDA PACKAGE

Cedar Hammock Community Development District

Inframark, Infrastructure Management Services
210 N. University Drive • Suite 702 • Coral Springs, Florida 33071
Telephone: (954) 603-0033 • Fax: (954) 345-1292

April 16, 2019

Board of Supervisors
Cedar Hammock Community Development District

Dear Board Members:

The meeting of the Board of Supervisors of the Cedar Hammock Community Development District will be held **Tuesday, April 23, 2019 at 2:00 p.m.** at the Cedar Hammock Clubhouse, 8660 Cedar Hammock Boulevard, Naples, Florida. Following is the advance agenda for this meeting.

- 1. Roll Call**
- 2. Approval of Agenda**
- 3. Comments on Agenda Items**
- 4. Public Hearing to Consider Imposition of Special Assessments and Adoption of an Assessment Roll**
 - A. Open the Public Hearing to Public Comment
 - B. Close the Public Hearing to Public Comment
 - C. Board Discussion
 - D. Consideration of Resolution 2019-08, Imposition, Levy, Collection and Enforcement of Certain Non-Ad Valorem Special Assessment
- 5. Old Business**
- 6. New Business**
- 7. Attorney's Report**
- 8. Engineer's Report**
- 9. Manager's Report**
 - A. Follow Up Items
- 10. Supervisors Requests**
- 11. Audience Comments**
- 12. Adjournment**

Cedar Hammock CDD

April 16, 2019

Page 2

The balance of the agenda is routine in nature and staff will give their reports at the meeting. In the meantime, if you have any questions, please contact me.

Sincerely,

Justin Faircloth

Justin Faircloth
Manager

cc: Dan Cox Brett Sealy Sam Marshall

Fourth Order of Business

4D.

RESOLUTION NO. 2019-08

A RESOLUTION OF THE BOARD OF SUPERVISORS OF THE CEDAR HAMMOCK COMMUNITY DEVELOPMENT DISTRICT OF COLLIER COUNTY, RELATING TO THE IMPOSITION, LEVY, COLLECTION AND ENFORCEMENT OF CERTAIN NON-AD VALOREM SPECIAL ASSESSMENTS TO PROVIDE PROJECT IMPROVEMENTS ON PROPERTY WITHIN THE DISTRICT CONSTITUTING THE A.SSESSMENT RESOLUTION; EQUALIZING, APPROVING, CONFIRMING, APPORTIONING, LEVYING AND DECLARING SPECIAL ASSESSMENTS; INDICATING THE LOCATION, NATURE AND ESTIMATED COST OF THE PROJECT IMPROVEMENTS WHERE COST IS TO BE DEFRAYED BY THE NON-AD VALOREM SPECIAL ASSESSMENTS; PROVIDING THE PORTIONS OF THE ESTIMATED COSTS OF THE PROJECT IMPROVEMENTS TO BE DEFRAYED BY THE NON-AD VALOREM SPECIAL ASSESSMENTS; PROVIDING THE MANNER IN WHICH SUCH NON-AD VALOREM SPECIAL ASSESSMENTS SHALL BE IMPOSED, LEVIED AND COLLECTED; PROVIDING WHEN THE IMPOSITION AND LEVY SHALL TAKE PLACE; DESIGNATING THE LANDS UPON WHICH THE NON-AD VALOREM SPECIAL ASSESSMENTS SHALL BE LEVIED; PROVIDING FOR AN ASSESSMENT PLAT; APPROVING AND ADOPTING THE FINAL ASSESSMENT ROLL; PROVIDING FOR SEVERABILITY AND CONFLICT; PROVIDING AN EFFECTIVE DATE.

WHEREAS, the Board pursuant to the uniform charter of the District, Section 190.006-190.041, Florida Statutes and pursuant to Chapter 170, Florida Statutes, has adopted Resolution 2019-04 determining to make or cause to be made certain project improvements and defray the expense thereof by non-ad valorem special assessments ("special assessments" or "assessments"), and has published Resolution 2019-04 in accord with Section 190.022, Florida Statutes, and Section 170.05, Florida Statutes; and

WHEREAS, as authorized by its charter and pursuant to Section 170.07, Florida Statutes, the Board adopted Resolution 2019-03 setting a public hearing for Tuesday, April 23, 2019 at 2:00 p.m. at Cedar Hammock Clubhouse, 8660 Cedar Hammock Boulevard, Naples, Florida, for the purpose of hearing public comment on the levy of the non-ad valorem special assessments and notice of such public hearing has been given by publication and by mail as required by Section 170.07. Florida Statutes; and

WHEREAS, pursuant to Section 170.08, Florida Statutes, the Board did meet as an equalizing board and held a public hearing on April 23, 2019 at 2:00 p.m. to receive testimony from affected property owners as to the propriety and advisability of making the project improvements and funding them with non-ad valorem special assessments on property within the District as to the cost thereof, as to the manner of payment therefor, and as to the amount thereof to be assessed against each property so improved; and

WHEREAS, the Board is empowered by the District's charter and is authorized to provide the project improvements, to issue special assessment bonds and to amortize bonds by the levy of non-ad valorem special assessments on property; and

WHEREAS, the District has ascertained and determined that special benefits shall accrue peculiar to the parcels of property involved, over and above any general community-wide benefits, from, and based upon the logical relationship with, the systems, facilities and services constituting the project improvements, and that the duty per parcel to pay for these benefits shall be in proportion, that is, fairly and reasonably apportioned per parcel as set forth in Exhibit "B", attached hereto and incorporated herein by reference; and

WHEREAS, the District has determined that the non-ad valorem special assessments shall not exceed the special and peculiar benefits to the property, and has adjusted and equalized the assessments on a basis of justice and right with reasonable and fair apportionment.

NOW, THEREFORE, BE IT RESOLVED BY THE BOARD OF SUPERVISORS OF THE CEDAR HAMMOCK COMMUNITY DEVELOPMENT DISTRICT COLLIER COUNTY, FLORIDA:

1. This resolution is adopted pursuant to the provisions of the District's uniform general law charter and Section 170.08, Florida Statutes. The findings and determinations set forth in the above Whereas clauses are true and correct and by this reference are incorporated herein.
2. This resolution constitutes the assessment resolution, following the Board having met as an equalizing board to hear and consider any and all complaints as to the non-ad valorem special assessments and having adjusted and equalized the assessments on a basis of justice and right and reasonable fair apportionment.
3. The nature and related aspects of project improvements, including the location of the improvements, as set forth in Exhibit "A", attached hereto, with more specific drawings of plans specifications on file in the offices of the District Engineer, are hereby authorized and approved and the proper officers, employees and agents of the District are hereby authorized and directed to take such further action as may be necessary or desirable to cause the same to be made.

4. The non-ad valorem special assessments shall be levied on all lots and lands adjoining and contiguous or bounding and abutting upon such improvements or otherwise specially and peculiarly benefitted thereby and further designated by the assessment plat hereinafter provided for.
5. The estimated cost of the project improvements is \$5,146,800.00 (hereinafter referred to as the "Estimated Cost").
6. The non-ad valorem special assessments will defray the Estimated Cost, plus financing related costs, discounts, capitalized interest, debt service reserve and contingency.
7. The manner in which the assessment shall be made is as set forth in Exhibit "B", attached hereto.
8. The office of the District Engineer, Banks Engineering, are located at 10511 Ben C. Pratt/Six Mile Cypress Parkway, Fort Myers. FL 33966.
9. At the referenced location, the District Engineer has available for inspection an assessment plat showing the land areas to be assessed, complete with plans and specifications describing the project improvements and delineating the Estimated Cost; these documents will remain open to inspection by the public.
10. In the event the actual cost of the improvements exceeds the Estimated Costs, such excess shall also be paid by the District from additional non-ad valorem special assessments on the specially and peculiarly benefitted property on the assessment plat, or, alternatively, from other legally available revenues of the District, or from contributions from other entities, as and when authorized specifically by the Board.
11. It is hereby ascertained, determined and declared that the project improvements as set forth in Exhibit "A" shall result in special benefits peculiar to the parcels of property involved, over and above any general community-wide benefit, based upon the logical relationship of the system, facilities and services provided to the property; it is further ascertained, determined and declared that among the special benefits so derived are the added use, the added enjoyment and the increased marketability of the property.
12. It is hereby ascertained, determined and declared that the apportionment of the duty of each parcel owner to pay the particular non-ad valorem special assessments, the subject of this assessment resolution, shall be based upon the total equivalent residential units as set forth in the assessment methodology and

related provisions of Exhibit "B" so that, thereby, the duty to pay is fairly and reasonably apportioned so as not to exceed the amount of special benefit peculiar to each parcel of property and in relationship of one property owner with the other.

13. Based upon this determination, ascertainment and declaration of special and peculiar benefit to property and of the duty to pay apportioned in a fair and reasonable manner, and limited by such determination, ascertainment and declaration, the final assessment roll as set forth in Exhibit "B", which shows the lots and lands assessed and the amount of the non-ad valorem special assessment levied against each parcel on property, on a fair and reasonable basis, and the number of annual installments as to which each such assessment is divided, subject to Paragraph 14 herein, is hereby approved and adopted. The special assessments for the project improvements on the parcels specially benefitted by the project improvements, all as specified in the final assessment roll included Exhibit "B" to this Resolution, are hereby equalized, approved, confirmed, reasonably apportioned, and levied. Promptly following the adoption of this Resolution, those special assessments shall be recorded by the Secretary of the Board of the District in a special book, to be known as the "Improvement Lien Book." Such special assessments with interest and any penalties shall constitute legal, valid and binding first liens upon the property against which such assessments are made until paid; however, upon completion of the improvements, the District shall credit to each of the assessments the difference in the assessments as originally made, approved, and confirmed and the proportionate part of the actual cost of the improvements to be paid by special assessments as finally determined upon the completion of the improvements, but in no event shall the final assessment exceed the amount of benefits originally assessed. In making such credit, no discount shall be granted or credit given for any part of the payee's proportionate share of any actual bond financing costs, such as capitalized interest, funded reserves or bond discount included in the estimated cost of any such improvements. Such credits shall be entered in the Improvement Lien Book. Once the final amount of special assessments for all of the Improvements have been determined, the term "special assessment" shall, with respect to each parcel, mean the sum finally assessed against that parcel as herein provided.
14. Commencing within the year the non-ad valorem special assessments are first levied, they shall be paid in not more than twenty (20) annual installments of principal and interest, which shall be subject to optional prepayments, all in a manner to be determined in a supplemental resolution. Collections of the special assessments shall be pursuant to procedures authorized by state law.

15. If any section or part of a section of this Resolution shall be declared invalid or unconstitutional, the validity, force and effect of any other section or part of a section of this Resolution shall not thereby be affected or impaired unless it clearly appears that such other section or part of a section of this Resolution is wholly or necessarily dependent upon the section or part of a section so held to be invalid or unconstitutional.
16. All resolutions, or parts thereof in conflict herewith are to the extent of such conflict, hereby superseded and repealed.
17. This resolution shall take effect upon its adoption.

APPROVED AND ADOPTED this 23rd day of April, 2019.

**THE CEDAR HAMMOCK
COMMUNITY DEVELOPMENT
DISTRICT**

Attest:

District Manager

Chairman, Board of Supervisors

SUPPLEMENTAL ENGINEERS REPORT

FOR

CEDAR HAMMOCK COMMUNITY DEVELOPMENT DISTRICT

REPAIR AND REPLACEMENT OF BRIDGES AND BULKHEADS

MARCH 2019

by



**10511 Six Mile Cypress Parkway, Suite 101
Fort Myers, Florida 33912**

TABLE OF CONTENTS

1.	INTRODUCTION	3
1.1	Description of Cedar Hammock Project	3-4
2.	PURPOSE OF THE ENGINEER'S REPORT	6
2.1	Purpose and Scope of the Report	6
2.2	Report Assumptions	6-7
3.	PROPOSED PROJECT	7
3.1	Overview	7
3.2	Proposed Project Elements	7-8
4.	STATUS OF PROJECT APPROVALS.....	10
4.1	Status of Project Approvals	10

LIST OF FIGURES

Figure 1 – Location Map.....	5
Figure 2 – Community Map Illustrating Facility Locations.....	9
Figure 3 – Cost Estimate Chart.....	11

1. Introduction

1.1 Description of Cedar Hammock Project

This is a Supplemental Engineer's Report prepared by Banks Engineering, the District Engineer for Cedar Hammock Community Development District (the "District") levy of special assessments to fund the reconstruction of District facilities consisting of lake bulk heads and bridges. The District was established by Collier County Ordinance No. 99-81 on November 23, 1999 and became effect on November 24, 1999. The District consists of approximately 417.3 acres within Collier County, Florida and lies within section 3, township 50 South, Range 26 East. The development lies just south of Davis Boulevard and west of Collier Boulevard. The District's responsibilities include planning, financing, constructing, acquiring, operating and maintain the lakes and related stormwater improvements within the boundaries of the Cedar Hammock residential community ("The Community"). Additionally, the District has been granted the power to borrow money and issue bonds for the purpose of reconstructing improvements to the lakes and related stormwater improvements within the Community. The Community consists of approximately sixty-five single family units, seven hundred and thirty-four multi-family units, a golf course, a club house and associated infrastructure, and utilities. The Community's stormwater infrastructure consists of 16 interconnected onsite lakes totaling approximately 74± acres. The stormwater infrastructure is permitted through South Florida Water Management District under permit number 11-01683-P.

This Supplement represents a Supplement to the original Engineer's Report Prepared by Banks Engineering Titled "Engineer's Report for Cedar Hammock Community Development District" dated June 1999.

Figure 1 depicts the location of the Project within the District's boundaries. All project lands are located within Collier County.

The District is governed by a (5) Member Board of Supervisors who are qualified electors and elected by qualified electors of the District. The Current Board is comprised of the following members:

<u>Norman Day</u>	Chairman
<u>Quentin Greeley</u>	Vice Chairman
<u>Gene Bolton</u>	Secretary
<u>John Martino</u>	Assistant Secretary
<u>Vacant</u>	Assistant Secretary

Management of the District is performed by Justin Faircloth, the District Manager, of Inframark, on a contractual basis. The District Manager oversees the operations and maintenance functions for the district facilities. The District has an office located at 5911 Country Lakes Blvd., Fort Myers, FL 33905.

FLORIDA

COLLIER COUNTY

GULF OF MEXICO

PROJECT LOCATION

N.T.S.

LOCATION MAP
CEDAR HAMMOCK
COLLIER COUNTY, FLORIDA

DATE	PROJECT	DRAWING	DESIGN	DRAWN	CHECKED	SCALE	SHEET
1/16/2019	1263CDD	LOC	SDJ	SDJ		N.T.S.	1

BANKS ENGINEERING
 Professional Engineers, Planners, & Land Surveyors
 Serving The State Of Florida

10911 16th Mile Cypress Parkway
 Fort Myers, Florida 33904
 PHONE: (239) 935-4400 FAX: (239) 935-3523
 E-MAIL: info@bankseng.com
 WWW.BANKSENG.COM

2. Purpose of the Engineer's Report

2.1 Purpose and Scope of the Report

This Engineer's Report has been prepared to assist with the design, permitting, financing and reconstruction of infrastructure improvements to be undertaken by the District. This report will present a narrative description of the proposed work and present engineer's estimates of costs for completing these improvements. The financing is expected to be in the form of one or more series of special assessment revenue bonds to be issued by the District. Alternatively, the District may structure the project and self-fund through the special assessment revenue.

2.2 Report Assumptions

In the preparation of this report, Banks Engineering relied upon information provided by the District and others. While Banks Engineering has not independently verified this information, we do not have reason to believe that the information is not valid for the purposes of this report.

The following are specific sources of information that were relied upon in the preparation of this report.

The following are specific sources of information that were relied upon in the preparation of this report.

- Forge Engineering Inc. geotechnical report number 2893-003.01 dated October 30, 2018.
- Ingenium, Inc. documents including sheet Pile Wall specification, and design drawings.
- Bridging Solutions plans: Cedar Hammock Golf & Country Club Golf cart bridges – Holes #4, #5B, #7, and #10 replacement plans.
- Banks Engineering wall replacement survey cross sections, Golf Hole #4 (island), Golf Hole #4 (road), Golf Hole #5 (island), Golf Hole #5 (road), Golf Hole #16, and Golf Hole #17.
- Bridging Solutions Inspection Reports dated: November 1, 2016 and February 28, 2018.

- Facilities operations and Maintenance Memorandum of Agreement between Cedar Hammock Community Development District and Cedar Hammock Golf and Country Club, Inc., dated April 22, 2008.

3. Proposed Project

3.1 Overview

The capital improvements described in this report represent the present intentions of the District. The implementation of any improvements discussed in this plan may require the final approval by regulatory and permitting agencies. The actual improvements may vary from the capital improvements in this report. Cost estimates contained in this report have been prepared based upon the best available information at this time. The actual cost of construction, final engineering design, planning, approvals, and permitting may vary from the cost estimates presented. The following sections describe the elements that will be funded by the District.

3.2 Proposed Project Elements

The Cedar Hammock CDD periodically solicits professional inspections of the bridges and lake bulkheads within the community. Past reports have suggested repairs such as replacing wear decking and railing on the bridges and replacing deteriorated boards on the bulkhead walls. The suggested repairs have been previously completed. These reports also typically estimate the useful life expectancy of the bridges and bulkheads before complete replacement will be needed. The most recent reports have suggested that several of the bridges and bulkheads are in a condition that warrant replacement (Reference Reports by Bridging Solutions dated 11/1/16 and 2/28/18).

The proposed Cedar Hammock project consists of the bridge and bulkhead repairs and replacements outlined in the most recent professional inspection reports.

Bulkhead replacement is proposed at:

- Lake 16 (Golf Hole #4) Island
- Lake 16 (Golf Hole #4) Road
- Lake 11 (Golf Hole #5) Road
- Lake 11 (Golf Hole #5) Island

- Lake 2 (Golf Hole #16)
- Lake 1 (Golf Hole #17)

Bridge replacement is proposed at:

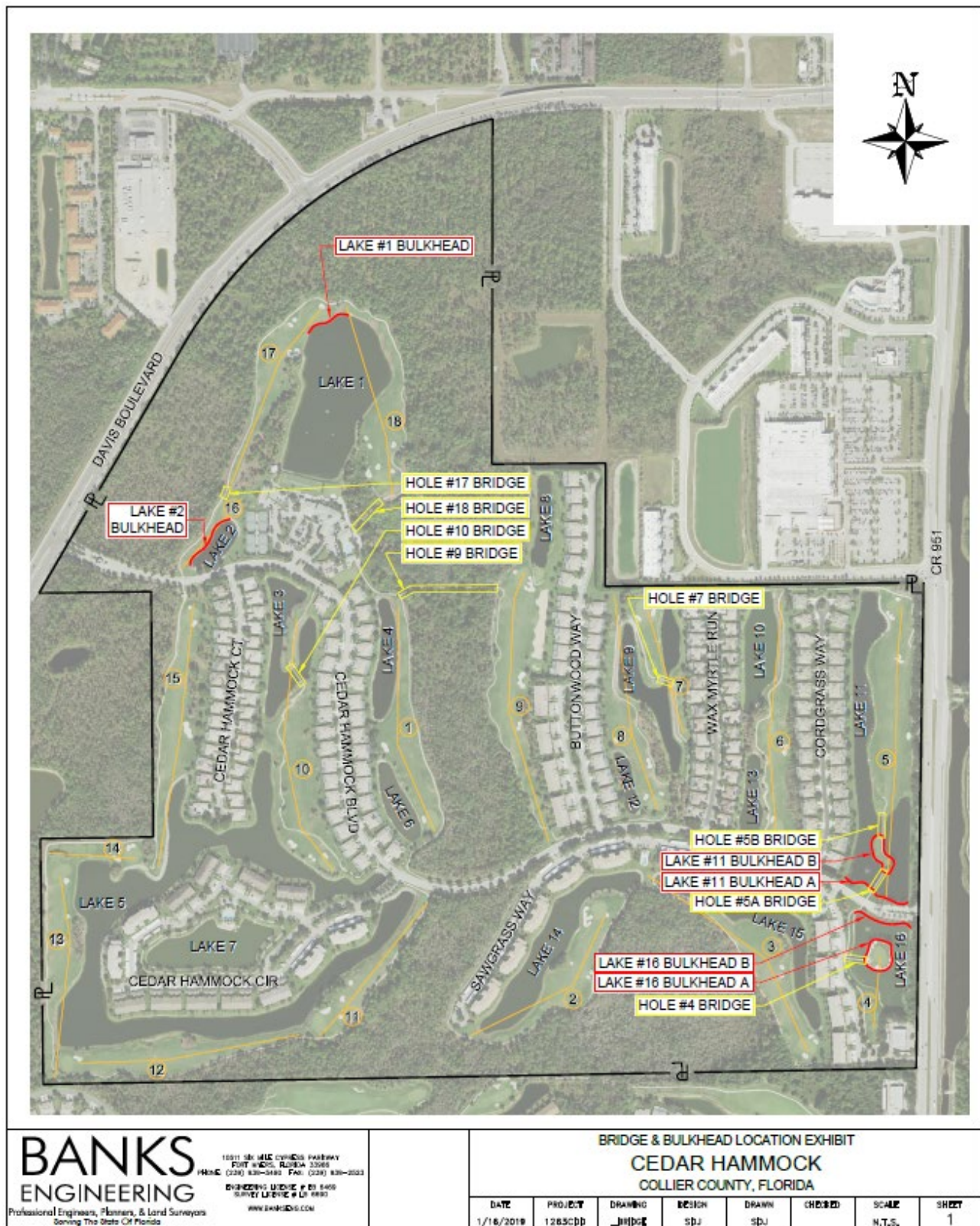
- Lake 16 (Golf Hole #4)
- Lake 11 (Golf Hole #5A)
- Lake 11 (Golf Hole #5B)
- Lake 3 (Golf Hole #10)
- Lake 9 (Golf Hole #7)

Bridge repairs are proposed at:

- Conservation Area C-2 (Golf Hole #9)
- Conservation Area C-2 (Golf Hole #18)

Figure 2 identifies the location of these works. There are additional bulkheads and one additional bridge within the Cedar Hammock Community not listed above. These facilities are not specifically included in this Engineering Report for repairs or replacement, but they may be added into the project as the CDD board desires.

Figure 2 – Community Map Illustrating Facility Locations



STATUS: Final
DATE: March 2019

4. Status of Project Approvals

4.1 Status of Project Approvals

The following list includes the development approvals required for the project construction.

1. South Florida Water Management District Environmental Resource Permit Modification for repair and replacement of bridges and bulkheads – *Pending*
2. Collier County Site Development Permits – *Pending*
3. Collier County Building Permits - *Pending*

Figure 3 – Cost Estimate Chart

Location	Work Description	Work Cost	*Contingency #1	Total Estimated Cost
Lake 16 (Golf Hole #4) Island	Bulkhead Replacement, Approximately 550LF, Approximately 112 Piles, Approximately 224 Anchors	\$ 605,000.00	\$ 90,750.00	\$ 695,750.00
Lake 16 (Golf Hole #4) Road	Bulkhead Replacement, Approximately 370LF, Approximately 75 Piles, Approximately 150 Anchors	\$ 407,000.00	\$ 61,050.00	\$ 468,050.00
Lake 11 (Golf Hole #5) Road	Bulkhead Replacement, Approximately 440LF, Approximately 89 Piles, Approximately 178 Anchors	\$ 484,000.00	\$ 72,600.00	\$ 556,600.00
Lake 11 (Golf Hole #5) Island	Bulkhead Replacement, Approximately 970LF, Approximately 194 Piles, Approximately 388 Anchors	\$ 1,067,000.00	\$ 160,050.00	\$ 1,227,050.00
Lake 2 (Golf Hole #16)	Bulkhead Replacement, Approximately 395LF, Approximately 80 Piles, Approximately 160 Anchors	\$ 434,500.00	\$ 65,175.00	\$ 499,675.00
Lake 1 (Golf Hole #17)	Bulkhead Replacement, Approximately 295LF, Approximately 60 Piles, Approximately 120 Anchors	\$ 324,500.00	\$ 48,675.00	\$ 373,175.00
	Sub Total Bulkhead Costs:	\$ 3,322,000.00	\$ 498,300.00	\$ 3,820,300.00
Lake 16 (Golf Hole #4)	Bridge Replacement, Approximately 103LF, Approximately 27 Piles, (remove existing bridge)	\$ 62,200.00	\$ 12,000.00	\$ 74,200.00
Lake 11 (Golf Hole #5) (A)	Bridge Replacement, Approximately 121LF, Approximately 22 Piles, (remove existing bridge)	\$ 74,300.00	\$ 13,000.00	\$ 87,300.00
Lake 11 (Golf Hole #5) (B)	Bridge Replacement, Approximately 124LF, Approximately 29 Piles, (remove existing bridge)	\$ 75,500.00	\$ 13,000.00	\$ 88,500.00
Lake 3 (Golf Hole #10)	Bridge Replacement, Approximately 120LF, Approximately 36 Piles, (remove existing bridge)	\$ 73,200.00	\$ 13,000.00	\$ 86,200.00
Lake 9 (Golf Hole #7)	Bridge Replacement, Approximately 69LF, Approximately 26 Piles, (remove existing bridge)	\$ 43,200.00	\$ 8,000.00	\$ 51,200.00
Conservation Area C-2 (Golf Holes #9 & #18)	Bridge Repairs, Approximately 555LF & 220LF	\$ 300,000.00	N/A	\$ 300,000.00
	Sub Total Bridge Costs:	\$ 628,400.00	\$ 59,000.00	\$ 687,400.00
Overall	Professional Services**, Permit Fees, Mailings	\$ 450,000.00	N/A	\$ 450,000.00
	Total Cost Estimate (2019 Dollars):			\$ 4,957,700.00
	Grand Total Adjusted for Inflation***:			\$ 5,146,800.00

* Contingency #1 is for drilling at locations where piles encounter rock, based on the geotechnical report it is estimated that all piles will encounter rock.
** Professional Services includes Professional Management, Legal, Engineering
*** Presumes job costs split evenly over four years and Inflation at 2.5% per year.

Cedar Hammock

Community Development District

Assessment Methodology Report

For Bridge and Bulkhead Repair Project

March 1, 2019

Prepared by



210 N University Drive, Suite 702
Coral Springs, FL 33701
(954) 753-5841
www.inframark.com

Cedar Hammock Community Development District
Preliminary Assessment Methodology Report
For Bridge and Bulkhead Repair Project

BACKGROUND

Cedar Hammock Community Development District (“District” or “CDD”) is an independent, special-purpose unit of local government established on November 23, 1999, by ordinance adopted by the County Commission of Collier County, Florida, in order to provide public infrastructure facilities and services to property owners located within the District. The District encompasses approximately 417.3 acres within Collier County, Florida, and currently consists of sixty-five single family units, seven hundred and thirty-four multi-family units, a golf course, a club house, associated infrastructure, and utilities.

PURPOSE

In February 2019, the District appointed Banks Engineering to assist with the design, permitting, and reconstruction of the lake bulkheads and bridges facilities. At that time, it was determined that the District would fund the project through the levy of special assessments (the “Assessments”). The assessments were approved to be collected in 4 annual installments as shown in the following tables. The purpose of this report is to formalize a methodology for allocating these bridge and bulkhead repair costs, in the form of a Special Assessment, to the benefited parcels.

REQUIREMENTS OF A VALID ASSESSMENT METHODOLOGY

Valid special assessments under Florida law have two requirements. First, the properties assessed must receive a special benefit from the improvements paid for via the assessments. Second, the assessments must be fairly and reasonably apportioned to the properties being assessed.

If these two characteristics of valid special assessments are adhered to, Florida law provides wide latitude to legislative bodies, such as the District’s Board of Supervisors, in approving special assessments. Indeed, Florida courts have found that the mathematical perfection of calculated special benefit is probably impossible. Only if the Board were to act in an arbitrary, capricious, or grossly unfair fashion would its assessment methods be overturned.

**Cedar Hammock Community Development District
Preliminary Assessment Methodology Report
For Bridge and Bulkhead Repair Project**

APPORTIONMENT METHODOLOGY

The methodology apportions these costs to the benefited properties based upon the special and peculiar benefits each receives flowing logically from the infrastructure program financed by the assessments and the reasonable and fair apportionment of the duty to pay for these levied assessments. As a result of evaluating the costs defined within the “Supplemental Engineer’s Report for the Cedar Hammock Community Development District: Repair of District Bulkheads and Bridges” dated March 2019, it was determined that the costs would be solely and equally distributed amongst the 799 residential units within the District as all residential units receive the same degree of special benefit from the capital improvements associated with the bulkhead and bridge repairs. Exhibits A and B in the Appendix show the projected costs to be allocated to the Benefited Parcels and the total assessment per unit allocated on an annual basis. Exhibit C contains the Assessment Roll for Fiscal Years 2019 through 2022.

ANNUAL ASSESSMENT SCHEDULE

The District has determined that year 1 will require \$2,409,450 to complete phase 1 of the project. The District intends to borrow \$500,000 from the unassigned cash balance to reduce the net amount of the first installment in year 1 to \$1,909,450. The District intends to utilize the Direct Collection Method to levy and collect the first installment in the amount of \$2,489.37 per unit ¹. For the three subsequent installments, the remaining balance of \$3,237,350 will be divided equally and will include the payback of \$500,000 used to reduce the first year installment. The District intends to utilize the Uniform Collection Method to collect the special assessment in years 2 through 4, totaling \$1,079,116.67 per year, or \$1,460.90 per unit ².

¹ This amount has been grossed up to include the 4% early payment discount.

² This amount has been grossed up to include the 4% early payment discount and 3.5% collection costs.

**Cedar Hammock Community Development District
Preliminary Assessment Methodology Report
For Bridge and Bulkhead Repair Project**

EXHIBITS

Cedar Hammock Community Development District

Preliminary Assessment Methodology Report

For Bridge and Bulkhead Repair Project

EXHIBIT A

PROPOSED COSTS OF BRIDGE AND BULKHEAD REPAIR*

<u>Location</u>	<u>Work Description</u>	<u>Work Cost</u>	<u>Contingency</u>	<u>Total Estimated Cost</u>
Lake 16 (Golf Hole #4) Island	Bulkhead Replacement	\$605,000	\$90,750	\$695,750
Lake 16 (Golf Hole #4) Road	Bulkhead Replacement	\$407,000	\$61,050	\$468,050
Lake 11 (Golf Hole #5) Road	Bulkhead Replacement	\$484,000	\$72,600	\$556,600
Lake 11 (Golf Hole #5) Island	Bulkhead Replacement	\$1,067,000	\$160,050	\$1,227,050
Lake 2 (Golf Hole #16)	Bulkhead Replacement	\$434,500	\$65,175	\$499,675
Lake 1 (Golf Hole #17)	Bulkhead Replacement	\$324,500	\$48,675	\$373,175
Sub Total Bulkhead Costs:		\$3,322,000	\$498,300	\$3,820,300
Lake 16 (Golf Hole #4)	Bridge Replacement	\$62,200	\$12,000	\$74,200
Lake 11 (Golf Hole #5) (A)	Bridge Replacement	\$74,300	\$13,000	\$87,300
Lake 11 (Golf Hole #5) (B)	Bridge Replacement	\$75,500	\$13,000	\$88,500
Lake 3 (Golf Hole #10)	Bridge Replacement	\$73,200	\$13,000	\$86,200
Lake 9 (Golf Hole #7)	Bridge Replacement	\$43,200	\$8,000	\$51,200
Conservation Area C-2 (Golf Hole #9)	Bridge Repairs	\$300,000	N/A	\$300,000
Sub Total Bridge Costs:		\$628,400	\$59,000	\$687,400
Professional Services**		\$450,000	N/A	\$450,000
Total Costs Estimate:				\$4,957,700
Inflation at 2.5% per year over 4 years				\$189,100
Grand Total:				\$5,146,800

* Costs provided by Banks Engineering

** Professional Services include Professional Management, Legal, Engineering, Permit Fees, and Costs for Mailings

**Cedar Hammock Community Development District
Preliminary Assessment Methodology Report
For Bridge and Bulkhead Repair Project**

EXHIBIT B

**PROPOSED SPECIAL ASSESSMENT SCHEDULE
For Fiscal Years 2019 through 2022**

<u>Fiscal Year</u>	<u>Units</u>	<u>Collection Method</u>	<u>Projected Costs</u>	<u>Net Assessment Per Unit</u>	<u>Gross Assessment Per Unit *</u>	<u>Total Gross Assessment Collected</u>
2018-2019	799	Direct Bill	\$1,909,449.00	\$2,389.80	\$2,489.37 **	\$1,989,009.38
2019-2020	799	Tax Collector	\$1,079,117.00	\$1,350.58	\$1,460.09	\$1,166,612.97
2020-2021	799	Tax Collector	\$1,079,117.00	\$1,350.58	\$1,460.09	\$1,166,612.97
2021-2022	799	Tax Collector	<u>\$1,079,117.00</u>	\$1,350.58	\$1,460.09	<u>\$1,166,612.97</u>
Total			\$5,146,800.00			\$5,488,848.29

* *Gross Assessments per unit include allowance for early payment discount (4%) and collection costs (3.5%) for parcels levied on the tax roll for Fiscal Year 2020 through 2022.*

** *Landowners will have 30 days to pay the first installment to take advantage of the 4% early payment discount.*

EXHIBIT C

**CEDAR HAMMOCK COMMUNITY DEVELOPMENT DISTRICT
SPECIAL ASSESSMENT DISTRICT COLLECTED & TAX COLLECTOR ASSESSMENT ROLL**

Parcel ID	Owner	Direct Bill	Tax Collector Assessment Roll		
		2018-2019	2019-2020	2020-2021	2021-2022
25895001040	FORSTER, DAVID LYNN	\$2,489.37	\$1,460.09	\$1,460.09	\$1,460.09
25895001066	MURPHY, PETER Q & PAMELA M	\$2,489.37	\$1,460.09	\$1,460.09	\$1,460.09
25895001082	MARGOLIS, KATHERINE S	\$2,489.37	\$1,460.09	\$1,460.09	\$1,460.09
25895001105	SEMBER JR, RONALD P	\$2,489.37	\$1,460.09	\$1,460.09	\$1,460.09
25895001121	PATTERI, ROBERT J	\$2,489.37	\$1,460.09	\$1,460.09	\$1,460.09
25895001147	ZITZOW, MICHAEL D	\$2,489.37	\$1,460.09	\$1,460.09	\$1,460.09
25895001163	BLANKENSHIP, R J & HEIDI L	\$2,489.37	\$1,460.09	\$1,460.09	\$1,460.09
25895001189	NANNERY, PHILIP R	\$2,489.37	\$1,460.09	\$1,460.09	\$1,460.09
25895001202	PAULSON, JANET	\$2,489.37	\$1,460.09	\$1,460.09	\$1,460.09
25895001228	SADOWSKI, ROBERT P	\$2,489.37	\$1,460.09	\$1,460.09	\$1,460.09
25895001244	HAUTZINGER, GEORGE A	\$2,489.37	\$1,460.09	\$1,460.09	\$1,460.09
25895001260	WILLIAMS, JOHN A	\$2,489.37	\$1,460.09	\$1,460.09	\$1,460.09
25895001286	Q J & D GREELEY REV TRUST	\$2,489.37	\$1,460.09	\$1,460.09	\$1,460.09
25895001309	SLY TR, JOANN	\$2,489.37	\$1,460.09	\$1,460.09	\$1,460.09
25895001325	SULLIVAN, ROBERT S	\$2,489.37	\$1,460.09	\$1,460.09	\$1,460.09
25895001341	CAPPY, MICHAEL L	\$2,489.37	\$1,460.09	\$1,460.09	\$1,460.09
25895001367	BENICK REALTY LLC	\$2,489.37	\$1,460.09	\$1,460.09	\$1,460.09
25895001383	CASTEEL, ROBERT L & JULIA J	\$2,489.37	\$1,460.09	\$1,460.09	\$1,460.09
25895001406	DUNN, JAMES C & KAREN J	\$2,489.37	\$1,460.09	\$1,460.09	\$1,460.09
25895001422	R L & S J HETRICK REV TRUST	\$2,489.37	\$1,460.09	\$1,460.09	\$1,460.09
25895001448	BOARDMAN, FRANK E & NANCY G	\$2,489.37	\$1,460.09	\$1,460.09	\$1,460.09
25895001464	JEANETTE G DODSON REV TRUST	\$2,489.37	\$1,460.09	\$1,460.09	\$1,460.09
25895001480	STOKES TR, RICHARD C	\$2,489.37	\$1,460.09	\$1,460.09	\$1,460.09
25895001503	JOHNSTON TR, THOMAS P	\$2,489.37	\$1,460.09	\$1,460.09	\$1,460.09
25895001529	WAINICK, LINDA	\$2,489.37	\$1,460.09	\$1,460.09	\$1,460.09
25895001545	MONTAGNINO, JAMES & MARY JO	\$2,489.37	\$1,460.09	\$1,460.09	\$1,460.09
25895001561	MYERS REVOCABLE TRUST	\$2,489.37	\$1,460.09	\$1,460.09	\$1,460.09
25895001587	JOYCE G O'SHAUGHNESSY TRUST	\$2,489.37	\$1,460.09	\$1,460.09	\$1,460.09
25895001600	HYNES, VERA M	\$2,489.37	\$1,460.09	\$1,460.09	\$1,460.09
25895001626	CHARMA D CAMP REV TRUST	\$2,489.37	\$1,460.09	\$1,460.09	\$1,460.09
25895001642	BROWN TR, JAMES F	\$2,489.37	\$1,460.09	\$1,460.09	\$1,460.09
25895001668	ELWOOD, MARJORIE	\$2,489.37	\$1,460.09	\$1,460.09	\$1,460.09
25895001684	KUHL, ROGER C & NANCY L	\$2,489.37	\$1,460.09	\$1,460.09	\$1,460.09
25895001707	FREEMAN, TIMOTHY M & JUDITH A	\$2,489.37	\$1,460.09	\$1,460.09	\$1,460.09
25895001723	BARBERI, GEORGE S & JOANN T	\$2,489.37	\$1,460.09	\$1,460.09	\$1,460.09
25895001749	F VENTURE-BERNARDINI LIV TRUST	\$2,489.37	\$1,460.09	\$1,460.09	\$1,460.09
25895001765	EVELYN LAGESTEE TRUST	\$2,489.37	\$1,460.09	\$1,460.09	\$1,460.09
25895001781	MARICA M GRIFFITH TRUST	\$2,489.37	\$1,460.09	\$1,460.09	\$1,460.09
25895001804	SMITH, JACK S & PATRICIA A	\$2,489.37	\$1,460.09	\$1,460.09	\$1,460.09
25895001820	ROKES, DAVID JAMES	\$2,489.37	\$1,460.09	\$1,460.09	\$1,460.09
25895001846	SHARP FAMILY TRUST	\$2,489.37	\$1,460.09	\$1,460.09	\$1,460.09
25895001862	BONNIE DEAN TRUST	\$2,489.37	\$1,460.09	\$1,460.09	\$1,460.09
25895001888	NYHAN, PATRICIA A	\$2,489.37	\$1,460.09	\$1,460.09	\$1,460.09
25895001901	MCPHEE FAMILY REALTY TRUST	\$2,489.37	\$1,460.09	\$1,460.09	\$1,460.09
25895001927	FARRAYE, JOSEPH J	\$2,489.37	\$1,460.09	\$1,460.09	\$1,460.09
25895001943	BROGAN GROUP LLC	\$2,489.37	\$1,460.09	\$1,460.09	\$1,460.09
25895001969	BELLENOIT, PAUL A	\$2,489.37	\$1,460.09	\$1,460.09	\$1,460.09
25895001985	BOTSFORD TR, KAREN B	\$2,489.37	\$1,460.09	\$1,460.09	\$1,460.09
25895002007	D'AMORE, NICK D & MARTHA S	\$2,489.37	\$1,460.09	\$1,460.09	\$1,460.09
25895002023	PATRICIA C BRUNN TRUST	\$2,489.37	\$1,460.09	\$1,460.09	\$1,460.09
25895002049	CAREY LYNN BROEN LIVING TRUST	\$2,489.37	\$1,460.09	\$1,460.09	\$1,460.09
25895002065	DIEDRICH, DAVID A & SANDRA	\$2,489.37	\$1,460.09	\$1,460.09	\$1,460.09
25895002081	WOODHEAD, MICHAEL	\$2,489.37	\$1,460.09	\$1,460.09	\$1,460.09
25895002104	JAMES P SHANLEY REV TRUST	\$2,489.37	\$1,460.09	\$1,460.09	\$1,460.09
25895002120	FLOOD FAMILY REV LIV TRUST	\$2,489.37	\$1,460.09	\$1,460.09	\$1,460.09
25895002146	FRED MAZZILLI REV TRUST	\$2,489.37	\$1,460.09	\$1,460.09	\$1,460.09
25895002162	BUNGE, GENE E & BARBARA E	\$2,489.37	\$1,460.09	\$1,460.09	\$1,460.09
25895002188	MUTERT, WILLIAM G & MICHELLE	\$2,489.37	\$1,460.09	\$1,460.09	\$1,460.09
25895002201	TERRANCE L BUSS SR &	\$2,489.37	\$1,460.09	\$1,460.09	\$1,460.09

Parcel ID	Owner	Direct Bill	Tax Collector Assessment Roll		
		2018-2019	2019-2020	2020-2021	2021-2022
25895002227	MALONEY, MICHAEL J & MARY T	\$2,489.37	\$1,460.09	\$1,460.09	\$1,460.09
25895002243	AWREY, ROBERT C & BETTY JEAN	\$2,489.37	\$1,460.09	\$1,460.09	\$1,460.09
25895002269	HARRINGTON, WILLIAM L	\$2,489.37	\$1,460.09	\$1,460.09	\$1,460.09
25895002285	DIEDRICH, LARRY & LORI	\$2,489.37	\$1,460.09	\$1,460.09	\$1,460.09
25895002308	STEVENSON III, THOMAS J	\$2,489.37	\$1,460.09	\$1,460.09	\$1,460.09
25895002324	PERDUE, FREDERICK D	\$2,489.37	\$1,460.09	\$1,460.09	\$1,460.09
25895002340	CHRISTIANSSEN, PETER & NANCY	\$2,489.37	\$1,460.09	\$1,460.09	\$1,460.09
25895002366	SHORE, LYLA J	\$2,489.37	\$1,460.09	\$1,460.09	\$1,460.09
25895002382	GRUNWALDT, CHARLENE	\$2,489.37	\$1,460.09	\$1,460.09	\$1,460.09
25895002405	RIDENOUR, ROSALIE M	\$2,489.37	\$1,460.09	\$1,460.09	\$1,460.09
25895002421	HOOLEY, JOHN F & BEGONA	\$2,489.37	\$1,460.09	\$1,460.09	\$1,460.09
25895002447	ANTHONY J BRUNO REV TRUST	\$2,489.37	\$1,460.09	\$1,460.09	\$1,460.09
25895002463	STROHAVER, ROBERT A & LYNNE F	\$2,489.37	\$1,460.09	\$1,460.09	\$1,460.09
25895002489	SWAN, PAUL A & CAROL A	\$2,489.37	\$1,460.09	\$1,460.09	\$1,460.09
25895002502	J & C A VANDERPLOEG REV TRUST	\$2,489.37	\$1,460.09	\$1,460.09	\$1,460.09
25895002528	K R & E Z THOMPSON TRUST	\$2,489.37	\$1,460.09	\$1,460.09	\$1,460.09
25895002544	RENNER, JACK F	\$2,489.37	\$1,460.09	\$1,460.09	\$1,460.09
25895002560	JOHNSON TR, ERWIN C	\$2,489.37	\$1,460.09	\$1,460.09	\$1,460.09
25895002586	MATHIES, CRAIG R & SHARI A	\$2,489.37	\$1,460.09	\$1,460.09	\$1,460.09
25895002609	KLING, WILLIAM A & BARBARA H	\$2,489.37	\$1,460.09	\$1,460.09	\$1,460.09
25895002625	PARKINSON, JOHN & LUCILLE M	\$2,489.37	\$1,460.09	\$1,460.09	\$1,460.09
25895002641	BAUMGARTNER REV TRUST	\$2,489.37	\$1,460.09	\$1,460.09	\$1,460.09
25895002667	LONG, LAWRENCE E & DEBORAH E	\$2,489.37	\$1,460.09	\$1,460.09	\$1,460.09
25895002683	GROH, JOHN J & LINDA M	\$2,489.37	\$1,460.09	\$1,460.09	\$1,460.09
25895002706	DEBORAH E DASSO TRUST	\$2,489.37	\$1,460.09	\$1,460.09	\$1,460.09
25895002722	MERSINGER, PATRICIA A	\$2,489.37	\$1,460.09	\$1,460.09	\$1,460.09
25895002748	WILSON, RICHARD E & JANICE M	\$2,489.37	\$1,460.09	\$1,460.09	\$1,460.09
25895002764	KATHLEEN M THOMAS REV TRUST	\$2,489.37	\$1,460.09	\$1,460.09	\$1,460.09
25895002780	BATTALINI TR, JUDITH A	\$2,489.37	\$1,460.09	\$1,460.09	\$1,460.09
25895002803	SACHS TR, CHARLES J	\$2,489.37	\$1,460.09	\$1,460.09	\$1,460.09
25895002829	DE MARCO, ROBERT P & MAUREEN A	\$2,489.37	\$1,460.09	\$1,460.09	\$1,460.09
25895002845	COTTER, JEANINE M	\$2,489.37	\$1,460.09	\$1,460.09	\$1,460.09
25895002861	WYLIE, JC	\$2,489.37	\$1,460.09	\$1,460.09	\$1,460.09
25895002887	DRABICKI, DENNIS & ESTELA	\$2,489.37	\$1,460.09	\$1,460.09	\$1,460.09
25895002900	IRENE LACEY REVOCABLE TRUST	\$2,489.37	\$1,460.09	\$1,460.09	\$1,460.09
25895002926	RUST, JOHN T & NANCY M	\$2,489.37	\$1,460.09	\$1,460.09	\$1,460.09
25895002942	PITTMAN, ROGER M & CYNTHIA A	\$2,489.37	\$1,460.09	\$1,460.09	\$1,460.09
25895002968	STEPHENS, DONALD J & LORI J	\$2,489.37	\$1,460.09	\$1,460.09	\$1,460.09
25895102046	CARTER LIVING TRUST	\$2,489.37	\$1,460.09	\$1,460.09	\$1,460.09
25895102062	GLEICHMAN, JAMES M & DIANA L	\$2,489.37	\$1,460.09	\$1,460.09	\$1,460.09
25895102088	S L & J A KOHLS REV TRUST	\$2,489.37	\$1,460.09	\$1,460.09	\$1,460.09
25895102101	MATHANGANI, PETER W & JOAN	\$2,489.37	\$1,460.09	\$1,460.09	\$1,460.09
25895102127	KOEHLER, MILTON J	\$2,489.37	\$1,460.09	\$1,460.09	\$1,460.09
25895102143	O'DONNELL JR, ROBERT C	\$2,489.37	\$1,460.09	\$1,460.09	\$1,460.09
25895102169	GARY L SALISBURY TRUST	\$2,489.37	\$1,460.09	\$1,460.09	\$1,460.09
25895102185	EASTMAN, LEONARD C	\$2,489.37	\$1,460.09	\$1,460.09	\$1,460.09
25895102208	KELLEY, GEORGE & TERESA J	\$2,489.37	\$1,460.09	\$1,460.09	\$1,460.09
25895102224	ALGER, GARY R & DORI C	\$2,489.37	\$1,460.09	\$1,460.09	\$1,460.09
25895102240	FRAUMENI JR, VINCENT & DIANE W	\$2,489.37	\$1,460.09	\$1,460.09	\$1,460.09
25895102266	1064465 ONTARIO INC	\$2,489.37	\$1,460.09	\$1,460.09	\$1,460.09
25895102282	PINYUH TR, SAM P & ARLENE H	\$2,489.37	\$1,460.09	\$1,460.09	\$1,460.09
25895102305	BARRETT TR, SHARON	\$2,489.37	\$1,460.09	\$1,460.09	\$1,460.09
25895102321	LUBAS, BENJAMIN	\$2,489.37	\$1,460.09	\$1,460.09	\$1,460.09
25895102347	HEALEY, EDWARD P & DOLORES C	\$2,489.37	\$1,460.09	\$1,460.09	\$1,460.09
25895102363	MUHME, NORMAN L & SALLY A	\$2,489.37	\$1,460.09	\$1,460.09	\$1,460.09
25895102389	DUGAN-NAPLES LLC	\$2,489.37	\$1,460.09	\$1,460.09	\$1,460.09
25895102402	ANNE M SCHLEEPER REV TRUST	\$2,489.37	\$1,460.09	\$1,460.09	\$1,460.09
25895102428	BALLY, FREDERICK R & SUZANNE M	\$2,489.37	\$1,460.09	\$1,460.09	\$1,460.09
25895102444	SKEETS LLC	\$2,489.37	\$1,460.09	\$1,460.09	\$1,460.09
25895102460	GEOFFREY, DAVID	\$2,489.37	\$1,460.09	\$1,460.09	\$1,460.09
25895102486	GRAHAM, SAMUEL	\$2,489.37	\$1,460.09	\$1,460.09	\$1,460.09
25895102509	MCKEE, JOHN F	\$2,489.37	\$1,460.09	\$1,460.09	\$1,460.09
25895102525	BAKER, DOUGLAS G & GLADYS A	\$2,489.37	\$1,460.09	\$1,460.09	\$1,460.09
25895102541	R N & P R SPEARS LIVING TRUST	\$2,489.37	\$1,460.09	\$1,460.09	\$1,460.09
25895110106	PATRICIA A PIERCE TRUST	\$2,489.37	\$1,460.09	\$1,460.09	\$1,460.09

Parcel ID	Owner	Direct Bill	Tax Collector Assessment Roll			
		2018-2019	2019-2020	2020-2021	2021-2022	
25895110122	L & K THIELEN LIVING TRUST	\$2,489.37	\$1,460.09	\$1,460.09	\$1,460.09	
25895110148	RUSH, CARL J & SHARYN I	\$2,489.37	\$1,460.09	\$1,460.09	\$1,460.09	
25895110164	DONN R HARTFORD REV TRUST	\$2,489.37	\$1,460.09	\$1,460.09	\$1,460.09	
25895110180	WATTS, JUDY R	\$2,489.37	\$1,460.09	\$1,460.09	\$1,460.09	
25895110203	SCOWDEN, CLARE A	\$2,489.37	\$1,460.09	\$1,460.09	\$1,460.09	
25895110229	DINATALE, LINDA JOYCE	\$2,489.37	\$1,460.09	\$1,460.09	\$1,460.09	
25895110245	WAYNE REFFKE REV TRUST	\$2,489.37	\$1,460.09	\$1,460.09	\$1,460.09	
25895110261	WARMAN, SARON S	\$2,489.37	\$1,460.09	\$1,460.09	\$1,460.09	
25895110287	SKITGIS, SANDRA	\$2,489.37	\$1,460.09	\$1,460.09	\$1,460.09	
25895110300	GRNOTTE, DAVID W & JEANNIE L	\$2,489.37	\$1,460.09	\$1,460.09	\$1,460.09	
25895110326	AHASIC, GARY L & JUDITH A	\$2,489.37	\$1,460.09	\$1,460.09	\$1,460.09	
25895110342	KULIK, RONALD S & CAROL M	\$2,489.37	\$1,460.09	\$1,460.09	\$1,460.09	
25895110368	CHARLES HICKS	\$2,489.37	\$1,460.09	\$1,460.09	\$1,460.09	
25895110384	SCOTT J KRENZ 2013 LIV TRUST	\$2,489.37	\$1,460.09	\$1,460.09	\$1,460.09	
25895110407	BERRY, ROBERT J & GLORIA	\$2,489.37	\$1,460.09	\$1,460.09	\$1,460.09	
25895110423	GANSTER, JOHN M & MAUREEN	\$2,489.37	\$1,460.09	\$1,460.09	\$1,460.09	
25895110449	MOBLEY, CHRISTOPHER L	\$2,489.37	\$1,460.09	\$1,460.09	\$1,460.09	
25895110465	GERALDINE A COOK LIVING TRUST	\$2,489.37	\$1,460.09	\$1,460.09	\$1,460.09	
25895110481	MACDOUGALL, WILLIAM & JOAN	\$2,489.37	\$1,460.09	\$1,460.09	\$1,460.09	
25895110504	FEINBERG, JACK & JUDITH	\$2,489.37	\$1,460.09	\$1,460.09	\$1,460.09	
25895110520	WOODS JR, JAMES F & NANCY G	\$2,489.37	\$1,460.09	\$1,460.09	\$1,460.09	
25895110546	MUELLER, GLENN T & LINDA B	\$2,489.37	\$1,460.09	\$1,460.09	\$1,460.09	
25895110562	ALLISON, THEODORE C & SHARON E	\$2,489.37	\$1,460.09	\$1,460.09	\$1,460.09	
25895110588	ELIASEK TR, DONALD J	\$2,489.37	\$1,460.09	\$1,460.09	\$1,460.09	
25895110601	HERTRICH, CARL E & JOHANNA	\$2,489.37	\$1,460.09	\$1,460.09	\$1,460.09	
25895110627	DUBE, GERARD E	\$2,489.37	\$1,460.09	\$1,460.09	\$1,460.09	
25895110643	GEYER REVOCABLE LIVING TRUST	\$2,489.37	\$1,460.09	\$1,460.09	\$1,460.09	
25895110669	GAULT, JEFFREY A & CYNTHIA L	\$2,489.37	\$1,460.09	\$1,460.09	\$1,460.09	
25895110685	PMW FAMILY LIVING TRUST	\$2,489.37	\$1,460.09	\$1,460.09	\$1,460.09	
25895110708	OSCKO, GARY F & MARY DONNA	\$2,489.37	\$1,460.09	\$1,460.09	\$1,460.09	
25895110724	KHACHADORIAN, AVAK ARAM	\$2,489.37	\$1,460.09	\$1,460.09	\$1,460.09	
25895110740	BABICZ ROAD REALTY TRUST	\$2,489.37	\$1,460.09	\$1,460.09	\$1,460.09	
25895110766	CARR, ANNA G	\$2,489.37	\$1,460.09	\$1,460.09	\$1,460.09	
25895110782	BROWN, PHILLIP D & ANN R	\$2,489.37	\$1,460.09	\$1,460.09	\$1,460.09	
25895110805	BARIBEAU, ROBERT R & CAROL L	\$2,489.37	\$1,460.09	\$1,460.09	\$1,460.09	
25895110821	VAIA, ALBERT R & PATRICIA K	\$2,489.37	\$1,460.09	\$1,460.09	\$1,460.09	
25895110847	HEROLD, DALE A & DIANNA LEE	\$2,489.37	\$1,460.09	\$1,460.09	\$1,460.09	
25895110863	CHENG, REN Y & CLEO L	\$2,489.37	\$1,460.09	\$1,460.09	\$1,460.09	
25895110889	BRIER TR, RICHARD P	\$2,489.37	\$1,460.09	\$1,460.09	\$1,460.09	
25895110902	QUIGLEY, JOHN J & TERESA E	\$2,489.37	\$1,460.09	\$1,460.09	\$1,460.09	
25895110928	PAYNE, ROBERT J	\$2,489.37	\$1,460.09	\$1,460.09	\$1,460.09	
25895110944	MACAIONE, ALEX & EILEEN S	\$2,489.37	\$1,460.09	\$1,460.09	\$1,460.09	
25895110960	SALEM, SAMUEL J & PAULA L	\$2,489.37	\$1,460.09	\$1,460.09	\$1,460.09	
25895110986	MONACO, ANTHONY F & PATRICIA W	\$2,489.37	\$1,460.09	\$1,460.09	\$1,460.09	
25895111008	BECHTEL TR, RAYMOND C	\$2,489.37	\$1,460.09	\$1,460.09	\$1,460.09	
25895111024	ALAN JAMES BRATT REV TRUST	\$2,489.37	\$1,460.09	\$1,460.09	\$1,460.09	
25895111040	SHAW, ROYAL S	\$2,489.37	\$1,460.09	\$1,460.09	\$1,460.09	
25895111066	SEARS TR, NANCY JANE TRASK	\$2,489.37	\$1,460.09	\$1,460.09	\$1,460.09	
25895111082	MARCHIONNE TR, ANN	\$2,489.37	\$1,460.09	\$1,460.09	\$1,460.09	
25895111105	BRUINIUS, BERNARD	\$2,489.37	\$1,460.09	\$1,460.09	\$1,460.09	
25895111121	VAN RYN TR, JACQUELINE R	\$2,489.37	\$1,460.09	\$1,460.09	\$1,460.09	
25895111147	SHAW, JAMES D & E JEAN	\$2,489.37	\$1,460.09	\$1,460.09	\$1,460.09	
25895111163	SCHEHR, THOMAS M & LORIE L	\$2,489.37	\$1,460.09	\$1,460.09	\$1,460.09	
25895111189	TAGNEY, A R	\$2,489.37	\$1,460.09	\$1,460.09	\$1,460.09	
25895111202	COLE, WILLIAM MILTON	\$2,489.37	\$1,460.09	\$1,460.09	\$1,460.09	
25895111228	ELLIS, RALPH H & JANICE A	\$2,489.37	\$1,460.09	\$1,460.09	\$1,460.09	
25895111244	M BUCHMAN CORNILLIE R/L/TRUST	\$2,489.37	\$1,460.09	\$1,460.09	\$1,460.09	
25895111260	MCKEE, JOHN F & MARYELLEN	\$2,489.37	\$1,460.09	\$1,460.09	\$1,460.09	
25895111286	MASON, CARL L & KATHLEEN M	\$2,489.37	\$1,460.09	\$1,460.09	\$1,460.09	
25895111309	HOLLAND, EUGENE F & RUTH E	\$2,489.37	\$1,460.09	\$1,460.09	\$1,460.09	
25895111325	STROTBECK, JOHN W & DIANE G	\$2,489.37	\$1,460.09	\$1,460.09	\$1,460.09	
25895120109	AVVISATO, PHILIP F & ELAINE M	\$2,489.37	\$1,460.09	\$1,460.09	\$1,460.09	
25895120125	GAIL DUKE TRUST	\$2,489.37	\$1,460.09	\$1,460.09	\$1,460.09	
25895120141	BARNOWSKI TRUST	\$2,489.37	\$1,460.09	\$1,460.09	\$1,460.09	
25895120167	THOMPSON, RONALD L & BERNADINE	\$2,489.37	\$1,460.09	\$1,460.09	\$1,460.09	

Parcel ID	Owner	Direct Bill	Tax Collector Assessment Roll			
		2018-2019	2019-2020	2020-2021	2021-2022	
25895120183	PERAS, LINDA	\$2,489.37	\$1,460.09	\$1,460.09	\$1,460.09	
25895120206	SOETENGA, TIMOTHY A	\$2,489.37	\$1,460.09	\$1,460.09	\$1,460.09	
25895120222	KELLEY, CRAIG & KATHRYN	\$2,489.37	\$1,460.09	\$1,460.09	\$1,460.09	
25895120248	FRANCES L KING TRUST	\$2,489.37	\$1,460.09	\$1,460.09	\$1,460.09	
25895120264	REBECCA HERING JACOBSEN TRUST	\$2,489.37	\$1,460.09	\$1,460.09	\$1,460.09	
25895120280	KAWA, JOHN N & BEVERLY D	\$2,489.37	\$1,460.09	\$1,460.09	\$1,460.09	
25895120303	LEBLANC, PATRICIA D'URSO	\$2,489.37	\$1,460.09	\$1,460.09	\$1,460.09	
25895120329	SCHMUDDE, DAVID	\$2,489.37	\$1,460.09	\$1,460.09	\$1,460.09	
25895120345	BARBERI, GEORGE S & JOAN T	\$2,489.37	\$1,460.09	\$1,460.09	\$1,460.09	
25895120361	SELVALA, RICHARD L	\$2,489.37	\$1,460.09	\$1,460.09	\$1,460.09	
25895120387	P BROOKE LAWRENCE TRUST	\$2,489.37	\$1,460.09	\$1,460.09	\$1,460.09	
25895120400	MINAMYER, LARRY D & SUSAN P	\$2,489.37	\$1,460.09	\$1,460.09	\$1,460.09	
25895120426	SHARON GEORGI MERTZ TRUST	\$2,489.37	\$1,460.09	\$1,460.09	\$1,460.09	
25895120442	MMAJ LLC	\$2,489.37	\$1,460.09	\$1,460.09	\$1,460.09	
25895120468	HAENER, WILLIAM & MARY JANE	\$2,489.37	\$1,460.09	\$1,460.09	\$1,460.09	
25895120484	FREDERICK, STEPHEN H & LAURENE	\$2,489.37	\$1,460.09	\$1,460.09	\$1,460.09	
25895120507	GARY R MCCLELLAN R/L/TRUST	\$2,489.37	\$1,460.09	\$1,460.09	\$1,460.09	
25895120523	CONLEY, DANIEL D & LYNN C	\$2,489.37	\$1,460.09	\$1,460.09	\$1,460.09	
25895120549	DAY, NORMAN J & LINDA T	\$2,489.37	\$1,460.09	\$1,460.09	\$1,460.09	
25895120565	TROUPE TR, WILLIAM H & LINDA M	\$2,489.37	\$1,460.09	\$1,460.09	\$1,460.09	
25895120581	RIDENOUR, ROSALIE M	\$2,489.37	\$1,460.09	\$1,460.09	\$1,460.09	
25895120604	CALHOUN, HARRY C & KATHLEEN L	\$2,489.37	\$1,460.09	\$1,460.09	\$1,460.09	
25895120620	GARGIULO, EDWARD T & MARILYN L	\$2,489.37	\$1,460.09	\$1,460.09	\$1,460.09	
25895120646	D DECKLEVER F REV LIV TRUST	\$2,489.37	\$1,460.09	\$1,460.09	\$1,460.09	
25895120662	GIORGI, PHILIPPE & GILETTE	\$2,489.37	\$1,460.09	\$1,460.09	\$1,460.09	
25895120688	FAESSLER, KAREN C	\$2,489.37	\$1,460.09	\$1,460.09	\$1,460.09	
25895120701	BELL, ARTHUR I & FLORENCE W	\$2,489.37	\$1,460.09	\$1,460.09	\$1,460.09	
25895120727	MARTINO, JOHN J	\$2,489.37	\$1,460.09	\$1,460.09	\$1,460.09	
25895129087	GOEDE TR, JOHN C	\$2,489.37	\$1,460.09	\$1,460.09	\$1,460.09	
25895129100	NIZICK, THOMAS & PATRICIA	\$2,489.37	\$1,460.09	\$1,460.09	\$1,460.09	
25895129126	MCTIGUE SR, JOHN P & MADELEINE	\$2,489.37	\$1,460.09	\$1,460.09	\$1,460.09	
25895129142	FERENCZ SR, PETER	\$2,489.37	\$1,460.09	\$1,460.09	\$1,460.09	
25895129168	PADDOCK, WAYNE L & MAUREEN A	\$2,489.37	\$1,460.09	\$1,460.09	\$1,460.09	
25895129184	REV AMD & RESTATED TRUST	\$2,489.37	\$1,460.09	\$1,460.09	\$1,460.09	
25895129207	ROBERTS, DIANE	\$2,489.37	\$1,460.09	\$1,460.09	\$1,460.09	
25895129223	ELDER, GEORGE & MARIAN	\$2,489.37	\$1,460.09	\$1,460.09	\$1,460.09	
25895129249	DONOFRIO, PAT M & CHARLENE A	\$2,489.37	\$1,460.09	\$1,460.09	\$1,460.09	
25895129265	ELDRIDGE, MARY L	\$2,489.37	\$1,460.09	\$1,460.09	\$1,460.09	
25895129281	SHARON GEORGI MERTZ TRUST	\$2,489.37	\$1,460.09	\$1,460.09	\$1,460.09	
25895129304	MANSON, ROBERT A	\$2,489.37	\$1,460.09	\$1,460.09	\$1,460.09	
25895129320	PECELUNAS, TOM & GAIL	\$2,489.37	\$1,460.09	\$1,460.09	\$1,460.09	
25895129346	THOMPSON, ALAN & ADELLE JANE	\$2,489.37	\$1,460.09	\$1,460.09	\$1,460.09	
25895129362	JAMES M HARPER IRREV TRUST	\$2,489.37	\$1,460.09	\$1,460.09	\$1,460.09	
25895129388	LARKINS, GARY & MARSHA L	\$2,489.37	\$1,460.09	\$1,460.09	\$1,460.09	
25895129401	CONSTANCE SANTARIGA REV TRUST	\$2,489.37	\$1,460.09	\$1,460.09	\$1,460.09	
25895129427	NANIA, MARK A	\$2,489.37	\$1,460.09	\$1,460.09	\$1,460.09	
25895129443	WIDICK, MICHAEL & JANICE J	\$2,489.37	\$1,460.09	\$1,460.09	\$1,460.09	
25895129469	AUGUSTINE, WILLIAM L & ELSIE J	\$2,489.37	\$1,460.09	\$1,460.09	\$1,460.09	
25895129485	BOLTON, GENE & BARBARA	\$2,489.37	\$1,460.09	\$1,460.09	\$1,460.09	
25895129508	TRAINOR, GEORGE L & DIANE AMY	\$2,489.37	\$1,460.09	\$1,460.09	\$1,460.09	
25895129524	DONOFRIO, DAWN	\$2,489.37	\$1,460.09	\$1,460.09	\$1,460.09	
25895129540	MARTELLA, RICHARD & JENNIFER	\$2,489.37	\$1,460.09	\$1,460.09	\$1,460.09	
76526003201	MARY LOUISE MALEY TRUST	\$2,489.37	\$1,460.09	\$1,460.09	\$1,460.09	
76526003227	CORMAN, TERRY & SALLY	\$2,489.37	\$1,460.09	\$1,460.09	\$1,460.09	
76526003243	MACCOURTNEY, LEO M & BARBARA D	\$2,489.37	\$1,460.09	\$1,460.09	\$1,460.09	
76526003269	BRIAN OHLIS P A 401K PLAN	\$2,489.37	\$1,460.09	\$1,460.09	\$1,460.09	
76526003285	CATHERINE M STAPELS REV TRUST	\$2,489.37	\$1,460.09	\$1,460.09	\$1,460.09	
76526003308	PENSCO TRUST CO	\$2,489.37	\$1,460.09	\$1,460.09	\$1,460.09	
76526003324	KOEHLER, DAVID E & JANICE E	\$2,489.37	\$1,460.09	\$1,460.09	\$1,460.09	
76526003340	REID, WILLIAM F & DONNA M	\$2,489.37	\$1,460.09	\$1,460.09	\$1,460.09	
76526003366	MARION J KARAS LIV TRUST	\$2,489.37	\$1,460.09	\$1,460.09	\$1,460.09	
76526003382	WILSON, STEPHEN F & MAUREEN B	\$2,489.37	\$1,460.09	\$1,460.09	\$1,460.09	
76526003405	LEE, YOUNG H & KYUNG Y	\$2,489.37	\$1,460.09	\$1,460.09	\$1,460.09	
76526003421	DEBAERE, KIMBERLY	\$2,489.37	\$1,460.09	\$1,460.09	\$1,460.09	
76526003447	LUTH TR, MARY J	\$2,489.37	\$1,460.09	\$1,460.09	\$1,460.09	

Parcel ID	Owner	Direct Bill	Tax Collector Assessment Roll			
		2018-2019	2019-2020	2020-2021	2021-2022	
76526003463	MEAD, JAMES W & LAURIE N	\$2,489.37	\$1,460.09	\$1,460.09	\$1,460.09	
76526003489	CASCIANO, DANIEL L & JOHANNA R	\$2,489.37	\$1,460.09	\$1,460.09	\$1,460.09	
76526003502	BUCHANAN, RICHARD & MARY	\$2,489.37	\$1,460.09	\$1,460.09	\$1,460.09	
76526003528	NICOLAY SR, RICHARD W & JOANNE	\$2,489.37	\$1,460.09	\$1,460.09	\$1,460.09	
76526003544	MORAN, JAMES M & KAREN A	\$2,489.37	\$1,460.09	\$1,460.09	\$1,460.09	
76526003560	LOWY, JEFFREY E & CAROL M	\$2,489.37	\$1,460.09	\$1,460.09	\$1,460.09	
76526003586	BROOKS, CHARLES STUART	\$2,489.37	\$1,460.09	\$1,460.09	\$1,460.09	
76526003609	BOYER TR, THOMAS J	\$2,489.37	\$1,460.09	\$1,460.09	\$1,460.09	
76526003625	JERALD L JACOBSEN TRUST	\$2,489.37	\$1,460.09	\$1,460.09	\$1,460.09	
76526003641	J H C REALTY TRUST	\$2,489.37	\$1,460.09	\$1,460.09	\$1,460.09	
76526003667	SPEERS TR, JOHN KEITH	\$2,489.37	\$1,460.09	\$1,460.09	\$1,460.09	
76526003683	HOVSEPIAN TR, NANCY P	\$2,489.37	\$1,460.09	\$1,460.09	\$1,460.09	
76526003706	GIERLICH, JAMES C & RITA J	\$2,489.37	\$1,460.09	\$1,460.09	\$1,460.09	
76526003722	NIXON TR, DAVID E	\$2,489.37	\$1,460.09	\$1,460.09	\$1,460.09	
76526003748	BOLOGNESE, V DENNIS & PAULA J	\$2,489.37	\$1,460.09	\$1,460.09	\$1,460.09	
76526003764	GALLAGHER, THOMAS J & SANDRA H	\$2,489.37	\$1,460.09	\$1,460.09	\$1,460.09	
76526003780	COAD, RICHARD ALAN	\$2,489.37	\$1,460.09	\$1,460.09	\$1,460.09	
76526003803	COCHRAN, DEBORAH J	\$2,489.37	\$1,460.09	\$1,460.09	\$1,460.09	
76526003829	VAN DRUS, MAURICE W	\$2,489.37	\$1,460.09	\$1,460.09	\$1,460.09	
76526003845	ROCHEFORT, BARBARA & PETER	\$2,489.37	\$1,460.09	\$1,460.09	\$1,460.09	
76526003861	JOHN C GRASER REV LIV TRUST	\$2,489.37	\$1,460.09	\$1,460.09	\$1,460.09	
76526003887	REESE JR, CARTER C & KAREN J	\$2,489.37	\$1,460.09	\$1,460.09	\$1,460.09	
76526003900	DORIA, THOMAS E & ANDREA M	\$2,489.37	\$1,460.09	\$1,460.09	\$1,460.09	
76526003926	CAMPBELL, REGINA & TERRY	\$2,489.37	\$1,460.09	\$1,460.09	\$1,460.09	
76526003942	MARSHALL, JAMES M & SUE	\$2,489.37	\$1,460.09	\$1,460.09	\$1,460.09	
76526003968	ALDO, RHONDA	\$2,489.37	\$1,460.09	\$1,460.09	\$1,460.09	
76526003984	BESTEMAN, DOUGLAS J & LINDA K	\$2,489.37	\$1,460.09	\$1,460.09	\$1,460.09	
76526004006	FEDERHOFER SR, WILLIAM C	\$2,489.37	\$1,460.09	\$1,460.09	\$1,460.09	
76526004022	TENCATE, DANIEL D & BEVERLY	\$2,489.37	\$1,460.09	\$1,460.09	\$1,460.09	
76526004048	ROBINSON TR, JAMES E	\$2,489.37	\$1,460.09	\$1,460.09	\$1,460.09	
76526004064	LLOYD, ROBERT L & JOAN D	\$2,489.37	\$1,460.09	\$1,460.09	\$1,460.09	
76526004080	LONERGAN, LAWERENCE R & ANGELA	\$2,489.37	\$1,460.09	\$1,460.09	\$1,460.09	
76526004103	BEATRIZ BALLI DEC OF TRUST	\$2,489.37	\$1,460.09	\$1,460.09	\$1,460.09	
76526004129	PALERMO, ALFRED S & ESTHER H	\$2,489.37	\$1,460.09	\$1,460.09	\$1,460.09	
76526004145	J & E ANTONUCCI TRUST	\$2,489.37	\$1,460.09	\$1,460.09	\$1,460.09	
76526004161	VITA J MEYER TRUST	\$2,489.37	\$1,460.09	\$1,460.09	\$1,460.09	
76526004187	STANZIANI, ANTONIO & MARIA	\$2,489.37	\$1,460.09	\$1,460.09	\$1,460.09	
76526004200	J & C MORRISSEY FAMILY TRUST	\$2,489.37	\$1,460.09	\$1,460.09	\$1,460.09	
76526004226	RUPE, JACKIE L	\$2,489.37	\$1,460.09	\$1,460.09	\$1,460.09	
76526004242	NEWMAN, JAMES FRANKLIN	\$2,489.37	\$1,460.09	\$1,460.09	\$1,460.09	
76526004268	KUHN, ROBERT & THERESE M	\$2,489.37	\$1,460.09	\$1,460.09	\$1,460.09	
76526004284	HUNT, ROBERT A & JANET E	\$2,489.37	\$1,460.09	\$1,460.09	\$1,460.09	
76526004307	VELEKEL, ROBERT J & JAN P	\$2,489.37	\$1,460.09	\$1,460.09	\$1,460.09	
76526004323	KNOX, PETER	\$2,489.37	\$1,460.09	\$1,460.09	\$1,460.09	
76526004349	KAPUSTA, JOHN D & ROSEMARIE	\$2,489.37	\$1,460.09	\$1,460.09	\$1,460.09	
76526004365	SIMMONS, DIANE K	\$2,489.37	\$1,460.09	\$1,460.09	\$1,460.09	
76526004381	CRANDALL, ROBERT P	\$2,489.37	\$1,460.09	\$1,460.09	\$1,460.09	
76527000025	SCHNITZLER, ANDREW T	\$2,489.37	\$1,460.09	\$1,460.09	\$1,460.09	
76527000041	MCCLAIN, MICHAEL L & BRENDA J	\$2,489.37	\$1,460.09	\$1,460.09	\$1,460.09	
76527000067	PURDY, LAWRENCE W & ROSEMARY C	\$2,489.37	\$1,460.09	\$1,460.09	\$1,460.09	
76527000083	PIZZUTI, DONATO & MARIE	\$2,489.37	\$1,460.09	\$1,460.09	\$1,460.09	
76527000106	1470049 ONTARIO INC	\$2,489.37	\$1,460.09	\$1,460.09	\$1,460.09	
76527000122	R R & S H LAMONTAGNE FAM TRUST	\$2,489.37	\$1,460.09	\$1,460.09	\$1,460.09	
76527000148	KARLE TRUST	\$2,489.37	\$1,460.09	\$1,460.09	\$1,460.09	
76527000164	SOLOMON, LAWRENCE & CAROL M	\$2,489.37	\$1,460.09	\$1,460.09	\$1,460.09	
76527000180	LACEY FAMILY REV TRUST	\$2,489.37	\$1,460.09	\$1,460.09	\$1,460.09	
76527000203	HOPKINS, JOHN N & BETTINA C	\$2,489.37	\$1,460.09	\$1,460.09	\$1,460.09	
76527000229	WASHINGTON, DWIGHT R & LORENE	\$2,489.37	\$1,460.09	\$1,460.09	\$1,460.09	
76527000245	CARLO, TIMOTHY P & DIANE D	\$2,489.37	\$1,460.09	\$1,460.09	\$1,460.09	
76527000261	SUESS, THOMAS A & KIM S	\$2,489.37	\$1,460.09	\$1,460.09	\$1,460.09	
76527000287	PATRICIA A BROWN REV TRUST	\$2,489.37	\$1,460.09	\$1,460.09	\$1,460.09	
76527000300	STUMPF, E CHARLES & MARY F	\$2,489.37	\$1,460.09	\$1,460.09	\$1,460.09	
76527000326	MARY D NOVICKAS LIVING TRUST	\$2,489.37	\$1,460.09	\$1,460.09	\$1,460.09	
76527000342	CONDON, J RONALD & LINDA A	\$2,489.37	\$1,460.09	\$1,460.09	\$1,460.09	
76527000368	V JOHN DAVIDIAN HOLDINGS LMT	\$2,489.37	\$1,460.09	\$1,460.09	\$1,460.09	

Parcel ID	Owner	Direct Bill	Tax Collector Assessment Roll			
		2018-2019	2019-2020	2020-2021	2021-2022	
76527000384	HAGLER, MICHAEL A & SYLVIA	\$2,489.37	\$1,460.09	\$1,460.09	\$1,460.09	
76527000407	JUDITH FALLON RIELLY 1999	\$2,489.37	\$1,460.09	\$1,460.09	\$1,460.09	
76527000423	LYONS TR, ROBERT J & ARLENE J	\$2,489.37	\$1,460.09	\$1,460.09	\$1,460.09	
76527000449	O'HARE, THOMAS T & LINDA K	\$2,489.37	\$1,460.09	\$1,460.09	\$1,460.09	
76527000465	KENT D TRUCKENBROD REV TRUST	\$2,489.37	\$1,460.09	\$1,460.09	\$1,460.09	
76527000481	WEED FAMILY REVOCABLE TRUST	\$2,489.37	\$1,460.09	\$1,460.09	\$1,460.09	
76527000504	RUDDY, CYNTHIA	\$2,489.37	\$1,460.09	\$1,460.09	\$1,460.09	
76527000520	SHEPHERD, BARRY T & DENISE	\$2,489.37	\$1,460.09	\$1,460.09	\$1,460.09	
76527000546	DWYER, FERGAL J	\$2,489.37	\$1,460.09	\$1,460.09	\$1,460.09	
76527000562	SMITH, GERALD W	\$2,489.37	\$1,460.09	\$1,460.09	\$1,460.09	
76527000588	LAMBERT, DIANE G	\$2,489.37	\$1,460.09	\$1,460.09	\$1,460.09	
76527000601	CAUL TR, WILLIAM C	\$2,489.37	\$1,460.09	\$1,460.09	\$1,460.09	
76527000627	BARBOUR, J THOMAS & PEGGY M	\$2,489.37	\$1,460.09	\$1,460.09	\$1,460.09	
76527000643	FLAUM, CHARLES R & LAURIE A	\$2,489.37	\$1,460.09	\$1,460.09	\$1,460.09	
76527000669	SEBACH, GARY L & RHONDA L	\$2,489.37	\$1,460.09	\$1,460.09	\$1,460.09	
76527000685	FREEMAN, PATRICK J & LISA M	\$2,489.37	\$1,460.09	\$1,460.09	\$1,460.09	
76527000708	HOOLEY TR, BEGONA	\$2,489.37	\$1,460.09	\$1,460.09	\$1,460.09	
76527000724	PODY II, JAMES J & TERRY A	\$2,489.37	\$1,460.09	\$1,460.09	\$1,460.09	
76527000740	DOHERTY, MICHAEL P & ANNE R	\$2,489.37	\$1,460.09	\$1,460.09	\$1,460.09	
76527000766	MANSFIELD TR, RICHARD H	\$2,489.37	\$1,460.09	\$1,460.09	\$1,460.09	
76527000782	RAPP FAMILY D W	\$2,489.37	\$1,460.09	\$1,460.09	\$1,460.09	
76527000805	MACKETT, LINDSAY C & SUSAN J	\$2,489.37	\$1,460.09	\$1,460.09	\$1,460.09	
76527000821	LEAVITT, DAVID N & JUDITH A	\$2,489.37	\$1,460.09	\$1,460.09	\$1,460.09	
76527000847	HIGHTOWER, KENNETH & DIANE	\$2,489.37	\$1,460.09	\$1,460.09	\$1,460.09	
76527000863	MARCHIONNE, FRANK & ANGELA	\$2,489.37	\$1,460.09	\$1,460.09	\$1,460.09	
76527000889	LEACH, DAVID A & BETH ANN	\$2,489.37	\$1,460.09	\$1,460.09	\$1,460.09	
76527000902	INNAMARATO, JOAN R	\$2,489.37	\$1,460.09	\$1,460.09	\$1,460.09	
76527000928	AHRENS TR, PARTICIA R	\$2,489.37	\$1,460.09	\$1,460.09	\$1,460.09	
76527000944	DAWSON, F JOSEPH & JUDITH K	\$2,489.37	\$1,460.09	\$1,460.09	\$1,460.09	
76527000960	MATIKA, DENNIS A & DEBORAH R	\$2,489.37	\$1,460.09	\$1,460.09	\$1,460.09	
76527000986	GEALT, MALCOLM & JANE	\$2,489.37	\$1,460.09	\$1,460.09	\$1,460.09	
76527001008	CODA, DAVID J & NANCY L	\$2,489.37	\$1,460.09	\$1,460.09	\$1,460.09	
76527001024	HAND JR, JOHN E	\$2,489.37	\$1,460.09	\$1,460.09	\$1,460.09	
76527001040	MATON, IAN RA & KAREN I	\$2,489.37	\$1,460.09	\$1,460.09	\$1,460.09	
76527001066	SWEETSER, CHARLES A & JANET E	\$2,489.37	\$1,460.09	\$1,460.09	\$1,460.09	
76527001082	HARRIS, RICHARD & PAULINE	\$2,489.37	\$1,460.09	\$1,460.09	\$1,460.09	
76527001105	RUST, JOHN T	\$2,489.37	\$1,460.09	\$1,460.09	\$1,460.09	
76527001121	JARVIS DALE PROFFITT TRUST	\$2,489.37	\$1,460.09	\$1,460.09	\$1,460.09	
76527001147	HOEHN, FRED & EMILIA	\$2,489.37	\$1,460.09	\$1,460.09	\$1,460.09	
76527001163	EARLY FAMILY REV TRUST	\$2,489.37	\$1,460.09	\$1,460.09	\$1,460.09	
76527001189	PAPILLON PROPERTIES LLC	\$2,489.37	\$1,460.09	\$1,460.09	\$1,460.09	
76527001202	AZEVEDO, JOAN	\$2,489.37	\$1,460.09	\$1,460.09	\$1,460.09	
76527008027	CARUANA, STEPHEN & MAUREEN	\$2,489.37	\$1,460.09	\$1,460.09	\$1,460.09	
76527008043	SALAZAR, RAYMOND J & DEBRA L	\$2,489.37	\$1,460.09	\$1,460.09	\$1,460.09	
76527008069	CESARIO FAMILY TRUST	\$2,489.37	\$1,460.09	\$1,460.09	\$1,460.09	
76527008085	CORMIER, DANIEL	\$2,489.37	\$1,460.09	\$1,460.09	\$1,460.09	
76527008108	MANDATO SR TR, VINCENT	\$2,489.37	\$1,460.09	\$1,460.09	\$1,460.09	
76527008124	GOEPFERT, BRIAN PAUL	\$2,489.37	\$1,460.09	\$1,460.09	\$1,460.09	
76527008140	CURRY, WILLIAM E & JUDITH A	\$2,489.37	\$1,460.09	\$1,460.09	\$1,460.09	
76527008166	GAGE, NORMAN & LISA	\$2,489.37	\$1,460.09	\$1,460.09	\$1,460.09	
76527008182	ROBERT J NOCERA REV TRUST	\$2,489.37	\$1,460.09	\$1,460.09	\$1,460.09	
76527008205	SEYMOUR FAMILY TRUST	\$2,489.37	\$1,460.09	\$1,460.09	\$1,460.09	
76527008221	SCHLEIF, PETER R	\$2,489.37	\$1,460.09	\$1,460.09	\$1,460.09	
76527008247	ENDER, BRYAN	\$2,489.37	\$1,460.09	\$1,460.09	\$1,460.09	
76527008263	METER, RICHARD WAYNE	\$2,489.37	\$1,460.09	\$1,460.09	\$1,460.09	
76527008289	KNUTESON REVOCABLE TRUST	\$2,489.37	\$1,460.09	\$1,460.09	\$1,460.09	
76527008302	PELLETIER, MARK A & ALICE M	\$2,489.37	\$1,460.09	\$1,460.09	\$1,460.09	
76527008328	MEYER, JAMES	\$2,489.37	\$1,460.09	\$1,460.09	\$1,460.09	
76527008344	MATTHEWS FAMILY LIVING TRUST	\$2,489.37	\$1,460.09	\$1,460.09	\$1,460.09	
76527008360	ALLEN, RICHARD F & DIANNE B	\$2,489.37	\$1,460.09	\$1,460.09	\$1,460.09	
76527008386	DANIEL LAIETA IRREV TRUST	\$2,489.37	\$1,460.09	\$1,460.09	\$1,460.09	
76527008409	PEACOCK, JAMES H & JANIS L	\$2,489.37	\$1,460.09	\$1,460.09	\$1,460.09	
76527008425	LEWIS, DONALD C & DIANE	\$2,489.37	\$1,460.09	\$1,460.09	\$1,460.09	
76527008441	MURNANE, JOHN J	\$2,489.37	\$1,460.09	\$1,460.09	\$1,460.09	
76527008467	CODY, DOUGLAS R & DOREEN M	\$2,489.37	\$1,460.09	\$1,460.09	\$1,460.09	

Parcel ID	Owner	Direct Bill	Tax Collector Assessment Roll			
		2018-2019	2019-2020	2020-2021	2021-2022	
76527008483	SALERNO QTIP TRUST	\$2,489.37	\$1,460.09	\$1,460.09	\$1,460.09	
76527008506	FAESSLER, MARK J & KAREN C	\$2,489.37	\$1,460.09	\$1,460.09	\$1,460.09	
76527008522	SCHRADE, MARION	\$2,489.37	\$1,460.09	\$1,460.09	\$1,460.09	
76527008548	HERSCH, LESLIE SUE	\$2,489.37	\$1,460.09	\$1,460.09	\$1,460.09	
76527008564	HOWARD JR, RANDOLPH G	\$2,489.37	\$1,460.09	\$1,460.09	\$1,460.09	
76527008580	WAGERS JR, JAMES R & BRENDA J	\$2,489.37	\$1,460.09	\$1,460.09	\$1,460.09	
76527008603	DENONCOUR, JEFFREY & LAURA	\$2,489.37	\$1,460.09	\$1,460.09	\$1,460.09	
76527010028	GIACOBBE, JENNIFER	\$2,489.37	\$1,460.09	\$1,460.09	\$1,460.09	
76527010044	ROLF, STEPHEN P & MARY M	\$2,489.37	\$1,460.09	\$1,460.09	\$1,460.09	
76527010060	J R & J M TRIPP REV LIV TRUST	\$2,489.37	\$1,460.09	\$1,460.09	\$1,460.09	
76527010086	JAGOUTZ, RICHARD S & SUSAN I	\$2,489.37	\$1,460.09	\$1,460.09	\$1,460.09	
76527010109	MACKNICK, HERBERT B & PATRICIA	\$2,489.37	\$1,460.09	\$1,460.09	\$1,460.09	
76527010125	OPERATION HOMEFRONT INC	\$2,489.37	\$1,460.09	\$1,460.09	\$1,460.09	
76527010141	BELT, JAMES J	\$2,489.37	\$1,460.09	\$1,460.09	\$1,460.09	
76527010167	LOMBARDI, ROBERT P	\$2,489.37	\$1,460.09	\$1,460.09	\$1,460.09	
76527010183	KITE, PETER	\$2,489.37	\$1,460.09	\$1,460.09	\$1,460.09	
76527010206	KITE, PETER & DAWN	\$2,489.37	\$1,460.09	\$1,460.09	\$1,460.09	
76527010222	LOMBARDI, KATHLEEN	\$2,489.37	\$1,460.09	\$1,460.09	\$1,460.09	
76527010248	HAWDON, MARY LOUISE	\$2,489.37	\$1,460.09	\$1,460.09	\$1,460.09	
76527010264	PATRICIA C MACK TRUST	\$2,489.37	\$1,460.09	\$1,460.09	\$1,460.09	
76527010280	STEWART, FRANK D & JANE C	\$2,489.37	\$1,460.09	\$1,460.09	\$1,460.09	
76527010303	DAGOSTINO, DOMINICK A	\$2,489.37	\$1,460.09	\$1,460.09	\$1,460.09	
76527010329	SCHIAVO, ROBERT & PAULA	\$2,489.37	\$1,460.09	\$1,460.09	\$1,460.09	
76527010345	EVANS, CATHY A	\$2,489.37	\$1,460.09	\$1,460.09	\$1,460.09	
76527010361	PARIS FAMILY IRREV TRUST	\$2,489.37	\$1,460.09	\$1,460.09	\$1,460.09	
76527010387	HUGHES, LOUIS P	\$2,489.37	\$1,460.09	\$1,460.09	\$1,460.09	
76527010400	WINZELER, JOHN	\$2,489.37	\$1,460.09	\$1,460.09	\$1,460.09	
76527010426	AVS ASSOCIATES LLC	\$2,489.37	\$1,460.09	\$1,460.09	\$1,460.09	
76527010442	LOPEZ, RONALD & ELLEN	\$2,489.37	\$1,460.09	\$1,460.09	\$1,460.09	
76527010468	UNSWORTH, STUART & THERESA	\$2,489.37	\$1,460.09	\$1,460.09	\$1,460.09	
76527010484	REPOLI, LEONARD	\$2,489.37	\$1,460.09	\$1,460.09	\$1,460.09	
76527010507	GOBRON, JOHN W & MARLENE A	\$2,489.37	\$1,460.09	\$1,460.09	\$1,460.09	
76527010523	GOEDE ESQ TR, JOHN C	\$2,489.37	\$1,460.09	\$1,460.09	\$1,460.09	
76527010549	HUTCHINS, WALTER L	\$2,489.37	\$1,460.09	\$1,460.09	\$1,460.09	
76527010565	GREEN, PHILLIP	\$2,489.37	\$1,460.09	\$1,460.09	\$1,460.09	
76527010581	BOWIE, JOHN F	\$2,489.37	\$1,460.09	\$1,460.09	\$1,460.09	
76527010604	DOROTHY V ARCARI TRUST	\$2,489.37	\$1,460.09	\$1,460.09	\$1,460.09	
76527010620	BETO, CHRISTIAN W	\$2,489.37	\$1,460.09	\$1,460.09	\$1,460.09	
76527010646	POLLIO, JOSEPH & IRENE	\$2,489.37	\$1,460.09	\$1,460.09	\$1,460.09	
76527010662	GERRY N BIRD TRUST	\$2,489.37	\$1,460.09	\$1,460.09	\$1,460.09	
76527010688	TURNER, STEVEN & LISA P	\$2,489.37	\$1,460.09	\$1,460.09	\$1,460.09	
76527010701	FLYNN, ROBERT J	\$2,489.37	\$1,460.09	\$1,460.09	\$1,460.09	
76527010727	COYNE, DENNIS M & MARY E	\$2,489.37	\$1,460.09	\$1,460.09	\$1,460.09	
76527010743	MIRARCHI, JOSEPH & TERESA	\$2,489.37	\$1,460.09	\$1,460.09	\$1,460.09	
76527010769	WALKIEWICZ, ROSELLE & STANLEY	\$2,489.37	\$1,460.09	\$1,460.09	\$1,460.09	
76527010785	BRATT, ALAN JAMES	\$2,489.37	\$1,460.09	\$1,460.09	\$1,460.09	
76527010808	KRICK, KEITH & DOROTHY	\$2,489.37	\$1,460.09	\$1,460.09	\$1,460.09	
76527010824	WALLACE, JOSEPH J	\$2,489.37	\$1,460.09	\$1,460.09	\$1,460.09	
76527010840	OLSON, NANCY A	\$2,489.37	\$1,460.09	\$1,460.09	\$1,460.09	
76527010866	CURRAN, JAMES & JILL	\$2,489.37	\$1,460.09	\$1,460.09	\$1,460.09	
76527010882	ANDERSON, CARL D	\$2,489.37	\$1,460.09	\$1,460.09	\$1,460.09	
76527010905	MCPHERSON, DOUGLAS R	\$2,489.37	\$1,460.09	\$1,460.09	\$1,460.09	
76527010921	KEVIN & LAURA MCMAHON TRUST #1	\$2,489.37	\$1,460.09	\$1,460.09	\$1,460.09	
76527010947	GERARD, STEPHEN I	\$2,489.37	\$1,460.09	\$1,460.09	\$1,460.09	
76527010963	MORELLI FAMILY TRUST	\$2,489.37	\$1,460.09	\$1,460.09	\$1,460.09	
76527010989	BEAUDETTE, BRIAN P	\$2,489.37	\$1,460.09	\$1,460.09	\$1,460.09	
76527011001	BESTEMAN, DOROTHY MAE	\$2,489.37	\$1,460.09	\$1,460.09	\$1,460.09	
76527011027	MAVROLEON, EMMANUEL G	\$2,489.37	\$1,460.09	\$1,460.09	\$1,460.09	
76527011043	COSENZA, JOHN	\$2,489.37	\$1,460.09	\$1,460.09	\$1,460.09	
76527011069	CORREIA, MICHAEL S & BETH A	\$2,489.37	\$1,460.09	\$1,460.09	\$1,460.09	
76527011085	LEONARD B COLLINS REV TRUST	\$2,489.37	\$1,460.09	\$1,460.09	\$1,460.09	
76527011108	LETO, LEONARD & SANDRA K	\$2,489.37	\$1,460.09	\$1,460.09	\$1,460.09	
76527011124	SULLIVAN, TIMOTHY F & JOANNE E	\$2,489.37	\$1,460.09	\$1,460.09	\$1,460.09	
76527011140	LUMPI, HANSJORG	\$2,489.37	\$1,460.09	\$1,460.09	\$1,460.09	
76527011166	WEI, CECELIA	\$2,489.37	\$1,460.09	\$1,460.09	\$1,460.09	

Parcel ID	Owner	Direct Bill	Tax Collector Assessment Roll			
		2018-2019	2019-2020	2020-2021	2021-2022	
76527011182	FISHER, SEAN	\$2,489.37	\$1,460.09	\$1,460.09	\$1,460.09	
76527011205	BENNING, GREGORY L	\$2,489.37	\$1,460.09	\$1,460.09	\$1,460.09	
76527012026	SHAW, JAMES R	\$2,489.37	\$1,460.09	\$1,460.09	\$1,460.09	
76527012042	SHEKELL, JOSEPH G & MARGARET M	\$2,489.37	\$1,460.09	\$1,460.09	\$1,460.09	
76527012068	POIRIER, STEPHEN M & PAMELA H	\$2,489.37	\$1,460.09	\$1,460.09	\$1,460.09	
76527012084	MADERA, DONALD K & KATHLEEN A	\$2,489.37	\$1,460.09	\$1,460.09	\$1,460.09	
76527012107	PAPILLON PROPERTIES LLC	\$2,489.37	\$1,460.09	\$1,460.09	\$1,460.09	
76527012123	BAUMEISTER, BRIAN & LAURA	\$2,489.37	\$1,460.09	\$1,460.09	\$1,460.09	
76527012149	PROF 2013 S3 LEGAL	\$2,489.37	\$1,460.09	\$1,460.09	\$1,460.09	
76527012165	LEATH, JUSTIN A & SARAH K	\$2,489.37	\$1,460.09	\$1,460.09	\$1,460.09	
76527012181	KATHRYN G EKKER REV TRUST	\$2,489.37	\$1,460.09	\$1,460.09	\$1,460.09	
76527012204	KIDWELL, JEFFREY J & DEBORAH B	\$2,489.37	\$1,460.09	\$1,460.09	\$1,460.09	
76527012220	THOMAS P REYNOLDS R/L TRUST	\$2,489.37	\$1,460.09	\$1,460.09	\$1,460.09	
76527012246	POLICASTRO, RICHARD V	\$2,489.37	\$1,460.09	\$1,460.09	\$1,460.09	
76527012262	JEROME, RONALD B	\$2,489.37	\$1,460.09	\$1,460.09	\$1,460.09	
76527012288	LEO, FRANK X	\$2,489.37	\$1,460.09	\$1,460.09	\$1,460.09	
76527012301	GERMAN, RAYMOND W & SANDRA M	\$2,489.37	\$1,460.09	\$1,460.09	\$1,460.09	
76527012327	DRISCOLL, MICHAEL J & LUCY A	\$2,489.37	\$1,460.09	\$1,460.09	\$1,460.09	
76527012343	OROURKE, JAMES A & MARILYN A	\$2,489.37	\$1,460.09	\$1,460.09	\$1,460.09	
76527012369	T P & M E ELWOOD REV TRUST	\$2,489.37	\$1,460.09	\$1,460.09	\$1,460.09	
76527012385	SINISI, VICKI M	\$2,489.37	\$1,460.09	\$1,460.09	\$1,460.09	
76527012408	HEAPHY, JOHN	\$2,489.37	\$1,460.09	\$1,460.09	\$1,460.09	
76527012424	HAGBERG, ERIKA	\$2,489.37	\$1,460.09	\$1,460.09	\$1,460.09	
76527012440	MAGLICIC, DANIEL J & ELLEN T	\$2,489.37	\$1,460.09	\$1,460.09	\$1,460.09	
76527012466	GOLDBERG, FRANK S	\$2,489.37	\$1,460.09	\$1,460.09	\$1,460.09	
76527012482	ALBERS, EDWARD R & KAREN A	\$2,489.37	\$1,460.09	\$1,460.09	\$1,460.09	
76527012505	ARCHER, WILLIAM J & ANN M	\$2,489.37	\$1,460.09	\$1,460.09	\$1,460.09	
76527012521	VIRGINIA L SWANSON REV TRUST	\$2,489.37	\$1,460.09	\$1,460.09	\$1,460.09	
76527012547	PACINI, KARL S	\$2,489.37	\$1,460.09	\$1,460.09	\$1,460.09	
76527012563	HUTTON, JEFFREY T & JEANA R	\$2,489.37	\$1,460.09	\$1,460.09	\$1,460.09	
76527012589	CLAYTON, DEREK W	\$2,489.37	\$1,460.09	\$1,460.09	\$1,460.09	
76527012602	LAMOTHE, JAMES D & LYNN M	\$2,489.37	\$1,460.09	\$1,460.09	\$1,460.09	
76527012628	PAIDEL, VICTOR & MARJORIE	\$2,489.37	\$1,460.09	\$1,460.09	\$1,460.09	
76527012644	ELDER, WILLIAM E & LUCILLE W	\$2,489.37	\$1,460.09	\$1,460.09	\$1,460.09	
76527012660	TOLLNER, WILLIAM E	\$2,489.37	\$1,460.09	\$1,460.09	\$1,460.09	
76527012686	RADICK, JOHN R & SUSAN M	\$2,489.37	\$1,460.09	\$1,460.09	\$1,460.09	
76527012709	BELCHAK, JEANNE	\$2,489.37	\$1,460.09	\$1,460.09	\$1,460.09	
76527012725	KULIK, RONALD S & CAROL M	\$2,489.37	\$1,460.09	\$1,460.09	\$1,460.09	
76527012741	MORRIS, CAROLYN	\$2,489.37	\$1,460.09	\$1,460.09	\$1,460.09	
76527012767	BUTLER SR, JAMES G	\$2,489.37	\$1,460.09	\$1,460.09	\$1,460.09	
76527012783	ZWILLINGER, ALAN & DEBORAH	\$2,489.37	\$1,460.09	\$1,460.09	\$1,460.09	
76527012806	DAMAL, EDWARD & THERESE	\$2,489.37	\$1,460.09	\$1,460.09	\$1,460.09	
76527012822	LACROIX FAMILY IRREV TRUST	\$2,489.37	\$1,460.09	\$1,460.09	\$1,460.09	
76527012848	COCO, PHILLIP J	\$2,489.37	\$1,460.09	\$1,460.09	\$1,460.09	
76527012864	RUTH, RAYMOND & CAROLE	\$2,489.37	\$1,460.09	\$1,460.09	\$1,460.09	
76527012880	SZYDLOWSKI, RICHARD K	\$2,489.37	\$1,460.09	\$1,460.09	\$1,460.09	
76527012903	PATTON, J D & JEANNE D	\$2,489.37	\$1,460.09	\$1,460.09	\$1,460.09	
76527012929	CALSOM ASSOCIATES LLC	\$2,489.37	\$1,460.09	\$1,460.09	\$1,460.09	
76527012945	MANTEY, PATRICIA A	\$2,489.37	\$1,460.09	\$1,460.09	\$1,460.09	
76527012961	WEED, DANIEL R & RICHELLE B	\$2,489.37	\$1,460.09	\$1,460.09	\$1,460.09	
76527012987	DUNAWAY, DAVID A & BEVERLY A	\$2,489.37	\$1,460.09	\$1,460.09	\$1,460.09	
76527013009	KING PUI SO, RAYMOND	\$2,489.37	\$1,460.09	\$1,460.09	\$1,460.09	
76527013025	LUCIER, MARK & DANIELLE	\$2,489.37	\$1,460.09	\$1,460.09	\$1,460.09	
76527013041	STEFAN LEPOLD LIVING TRUST	\$2,489.37	\$1,460.09	\$1,460.09	\$1,460.09	
76527013067	HARVEY, PHILIP & JULIE MARY	\$2,489.37	\$1,460.09	\$1,460.09	\$1,460.09	
76527013083	LIPARI, CYNTHIA A	\$2,489.37	\$1,460.09	\$1,460.09	\$1,460.09	
76527013106	MCFARLAND, JAMES E & JOYCE H	\$2,489.37	\$1,460.09	\$1,460.09	\$1,460.09	
76527013122	HICKEY JR, JOSEPH P & KATHY K	\$2,489.37	\$1,460.09	\$1,460.09	\$1,460.09	
76527013148	BARNETT, JOHN H & CLARE H	\$2,489.37	\$1,460.09	\$1,460.09	\$1,460.09	
76527013164	CLAPTON, MARTIN G & MAUREEN A	\$2,489.37	\$1,460.09	\$1,460.09	\$1,460.09	
76527013180	KULIK, RONALD S & CAROL M	\$2,489.37	\$1,460.09	\$1,460.09	\$1,460.09	
76527013203	COX, WENDELL & MARILYN	\$2,489.37	\$1,460.09	\$1,460.09	\$1,460.09	
76527015023	COLONE, FRANK G & MARGARET E	\$2,489.37	\$1,460.09	\$1,460.09	\$1,460.09	
76527015049	MARSTON, MICHAEL V & DIANE D	\$2,489.37	\$1,460.09	\$1,460.09	\$1,460.09	
76527015065	GALLAGHER, KEVIN	\$2,489.37	\$1,460.09	\$1,460.09	\$1,460.09	

Parcel ID	Owner	Direct Bill	Tax Collector Assessment Roll			
		2018-2019	2019-2020	2020-2021	2021-2022	
76527015081	CONNOLLY, THOMAS C	\$2,489.37	\$1,460.09	\$1,460.09	\$1,460.09	
76527015104	MCLEAN, JOSEPH J	\$2,489.37	\$1,460.09	\$1,460.09	\$1,460.09	
76527015120	LAPINE, DENNIS & CAROLYN	\$2,489.37	\$1,460.09	\$1,460.09	\$1,460.09	
76527015146	DAY, EDWIN J & JEAN C	\$2,489.37	\$1,460.09	\$1,460.09	\$1,460.09	
76527015162	LUNDY, WILLIAM & MARJORIE	\$2,489.37	\$1,460.09	\$1,460.09	\$1,460.09	
76527015188	G R & D R BAUMGARTEN TRUST	\$2,489.37	\$1,460.09	\$1,460.09	\$1,460.09	
76527015201	RIGBY, PAUL & VAL	\$2,489.37	\$1,460.09	\$1,460.09	\$1,460.09	
76527015227	MOLA, JOHN L	\$2,489.37	\$1,460.09	\$1,460.09	\$1,460.09	
76527015243	COSTANZA, CHRISTOPHER & CATHY	\$2,489.37	\$1,460.09	\$1,460.09	\$1,460.09	
76527015269	RAJANI, RAJEEV	\$2,489.37	\$1,460.09	\$1,460.09	\$1,460.09	
76527015285	MARY E PULICK TRUST	\$2,489.37	\$1,460.09	\$1,460.09	\$1,460.09	
76527015308	S WEAVER SELF DEC OF TRUST	\$2,489.37	\$1,460.09	\$1,460.09	\$1,460.09	
76527015324	BOYCE, TIMOTHY W & KAREN	\$2,489.37	\$1,460.09	\$1,460.09	\$1,460.09	
76527015340	HERSCH, NATHAN	\$2,489.37	\$1,460.09	\$1,460.09	\$1,460.09	
76527015366	HELTON, RICHARD E & CYNTHIA A	\$2,489.37	\$1,460.09	\$1,460.09	\$1,460.09	
76527015382	HUNEGS, ROBERT	\$2,489.37	\$1,460.09	\$1,460.09	\$1,460.09	
76527015405	HOWITT, ROBERT T	\$2,489.37	\$1,460.09	\$1,460.09	\$1,460.09	
76527015421	K & R REALTY TRUST	\$2,489.37	\$1,460.09	\$1,460.09	\$1,460.09	
76527015447	BASSANI, ANNE MARIE	\$2,489.37	\$1,460.09	\$1,460.09	\$1,460.09	
76527015463	PARKER, MICHAEL A & ASHLEY L	\$2,489.37	\$1,460.09	\$1,460.09	\$1,460.09	
76527015489	BARBARA L REAGAN DECLAR TRUST	\$2,489.37	\$1,460.09	\$1,460.09	\$1,460.09	
76527015502	ROGOW, MICHAEL & MARION	\$2,489.37	\$1,460.09	\$1,460.09	\$1,460.09	
76527015528	COHEN, JOAN	\$2,489.37	\$1,460.09	\$1,460.09	\$1,460.09	
76527015544	KERSHNER, KEVIN P & D SUZANNE	\$2,489.37	\$1,460.09	\$1,460.09	\$1,460.09	
76527015560	HAYES JR, EDWARD J & CATHY L	\$2,489.37	\$1,460.09	\$1,460.09	\$1,460.09	
76527015586	MILLER, DARYL L & ANNA L	\$2,489.37	\$1,460.09	\$1,460.09	\$1,460.09	
76527015609	POWERS, ROBERT J & VERONICA A	\$2,489.37	\$1,460.09	\$1,460.09	\$1,460.09	
76527015625	KEATING, JAMES M & CLARE R	\$2,489.37	\$1,460.09	\$1,460.09	\$1,460.09	
76527015641	REED, RONALD	\$2,489.37	\$1,460.09	\$1,460.09	\$1,460.09	
76527015667	GERARD, STEPHEN	\$2,489.37	\$1,460.09	\$1,460.09	\$1,460.09	
76527015683	MUELLER, GLENN T	\$2,489.37	\$1,460.09	\$1,460.09	\$1,460.09	
76527015706	S & B REALTY TRUST	\$2,489.37	\$1,460.09	\$1,460.09	\$1,460.09	
76527015722	BASALYGA JR, PETER & CAROL A	\$2,489.37	\$1,460.09	\$1,460.09	\$1,460.09	
76527015748	PEDI TR, ROY & PATRICIA	\$2,489.37	\$1,460.09	\$1,460.09	\$1,460.09	
76527015764	CAMP, JEFFREY SUMNER	\$2,489.37	\$1,460.09	\$1,460.09	\$1,460.09	
76527015780	WILLENBORG, ART & JEANNE	\$2,489.37	\$1,460.09	\$1,460.09	\$1,460.09	
76527015803	OHTAKA, RYOHEI & KEIKO H	\$2,489.37	\$1,460.09	\$1,460.09	\$1,460.09	
76527015829	MILLS, GERALD K & DOROTHY J	\$2,489.37	\$1,460.09	\$1,460.09	\$1,460.09	
76527015845	OBRIEN, RICHARD F & EILEEN A	\$2,489.37	\$1,460.09	\$1,460.09	\$1,460.09	
76527015861	PUSHEE, GARY	\$2,489.37	\$1,460.09	\$1,460.09	\$1,460.09	
76527015887	SAWGRASS WAY 3026 LLC	\$2,489.37	\$1,460.09	\$1,460.09	\$1,460.09	
76527015900	STENZ, ROBERT M	\$2,489.37	\$1,460.09	\$1,460.09	\$1,460.09	
76527015926	BUCHLER TR, RAYMOND J & JAN S	\$2,489.37	\$1,460.09	\$1,460.09	\$1,460.09	
76527015942	HANSEN, KAY	\$2,489.37	\$1,460.09	\$1,460.09	\$1,460.09	
76527015968	YARR, STEPHEN & ANNE	\$2,489.37	\$1,460.09	\$1,460.09	\$1,460.09	
76527015984	LUMPI, HANSJORG	\$2,489.37	\$1,460.09	\$1,460.09	\$1,460.09	
76527016006	ESW REAL ESTATE LLC	\$2,489.37	\$1,460.09	\$1,460.09	\$1,460.09	
76527016022	RAFFERTY, JOHN & MARIE	\$2,489.37	\$1,460.09	\$1,460.09	\$1,460.09	
76527016048	STRANG, THOMAS E & LILLIAN J	\$2,489.37	\$1,460.09	\$1,460.09	\$1,460.09	
76527016064	LUONGO, JOHN & MARIE	\$2,489.37	\$1,460.09	\$1,460.09	\$1,460.09	
76527016080	KORNOSKY, DALE T & KATHLEEN A	\$2,489.37	\$1,460.09	\$1,460.09	\$1,460.09	
76527016103	DUNN, STEPHEN W & PATRICIA A	\$2,489.37	\$1,460.09	\$1,460.09	\$1,460.09	
76527016129	R A & L J SCHERFF REV TRUST	\$2,489.37	\$1,460.09	\$1,460.09	\$1,460.09	
76527016145	FELICIANO, JOSEPH A & KELLY M	\$2,489.37	\$1,460.09	\$1,460.09	\$1,460.09	
76527016161	OTOOLE, THOMAS & CHRISTINE	\$2,489.37	\$1,460.09	\$1,460.09	\$1,460.09	
76527016187	SAWGRASS REALTY TRUST	\$2,489.37	\$1,460.09	\$1,460.09	\$1,460.09	
76527016200	SHERIDAN, JOHN R & PAMELA A	\$2,489.37	\$1,460.09	\$1,460.09	\$1,460.09	
79872000528	WARREN, WILLIAM F	\$2,489.37	\$1,460.09	\$1,460.09	\$1,460.09	
79872000544	THOMPSON, JANE M	\$2,489.37	\$1,460.09	\$1,460.09	\$1,460.09	
79872000560	SKODOL, EDWARD C & JOAN C	\$2,489.37	\$1,460.09	\$1,460.09	\$1,460.09	
79872000586	WOHNOUTKA, NANCY J	\$2,489.37	\$1,460.09	\$1,460.09	\$1,460.09	
79872000609	LLANOS, HENRY & PAULINE L	\$2,489.37	\$1,460.09	\$1,460.09	\$1,460.09	
79872000625	CREDILLE LIVING TRUST	\$2,489.37	\$1,460.09	\$1,460.09	\$1,460.09	
79872000641	DECARLO JR, ALBERT & PEGGY	\$2,489.37	\$1,460.09	\$1,460.09	\$1,460.09	
79872000667	LUBINGER, JOSEPH H	\$2,489.37	\$1,460.09	\$1,460.09	\$1,460.09	

Parcel ID	Owner	Direct Bill	Tax Collector Assessment Roll			
		2018-2019	2019-2020	2020-2021	2021-2022	
79872000683	GLASS, MAUREEN B	\$2,489.37	\$1,460.09	\$1,460.09	\$1,460.09	
79872000706	BARCUME, JOHN & BARBARA	\$2,489.37	\$1,460.09	\$1,460.09	\$1,460.09	
79872000722	ODELL FAMILY TRUST	\$2,489.37	\$1,460.09	\$1,460.09	\$1,460.09	
79872000748	DIAFERIO, JOSEPH D & SHIRLEY	\$2,489.37	\$1,460.09	\$1,460.09	\$1,460.09	
79872000764	STOLZ, JEAN	\$2,489.37	\$1,460.09	\$1,460.09	\$1,460.09	
79872000780	DOROTHY A ZEGARSKI TRUST	\$2,489.37	\$1,460.09	\$1,460.09	\$1,460.09	
79872000803	PLUMERI, VINCENT	\$2,489.37	\$1,460.09	\$1,460.09	\$1,460.09	
79872000829	HAGIST, JACOB J & CONSTANCE	\$2,489.37	\$1,460.09	\$1,460.09	\$1,460.09	
79872000845	PAUL T SLEBODA & SHARON A	\$2,489.37	\$1,460.09	\$1,460.09	\$1,460.09	
79872000861	FRASER, FRANCIS & ELIZABETH	\$2,489.37	\$1,460.09	\$1,460.09	\$1,460.09	
79872000887	STOKES, ANDREW A & DARLENE L	\$2,489.37	\$1,460.09	\$1,460.09	\$1,460.09	
79872000900	MAURINUS, STEVEN A	\$2,489.37	\$1,460.09	\$1,460.09	\$1,460.09	
79872000926	CLOUGH 2014 FAMILY TRUST	\$2,489.37	\$1,460.09	\$1,460.09	\$1,460.09	
79872000942	D R BOSTON REV LIV TRUST	\$2,489.37	\$1,460.09	\$1,460.09	\$1,460.09	
79872000968	G & P P SENA JT LIVING TRUST	\$2,489.37	\$1,460.09	\$1,460.09	\$1,460.09	
79872000984	CARPENTER JR, BERNARD A	\$2,489.37	\$1,460.09	\$1,460.09	\$1,460.09	
79872001006	DAVID E HOLLOWELL REV TRUST	\$2,489.37	\$1,460.09	\$1,460.09	\$1,460.09	
79872001022	BROWN, ROBERT T & BONNIE S	\$2,489.37	\$1,460.09	\$1,460.09	\$1,460.09	
79872001048	HANNIFY, DANIEL T & JUDITH A	\$2,489.37	\$1,460.09	\$1,460.09	\$1,460.09	
79872001064	VAZZANO, TOM & JOYCE	\$2,489.37	\$1,460.09	\$1,460.09	\$1,460.09	
79872001080	DENNIS M OCONNOR LIV TRUST	\$2,489.37	\$1,460.09	\$1,460.09	\$1,460.09	
79872001103	TOLLNER, WILLIAM E	\$2,489.37	\$1,460.09	\$1,460.09	\$1,460.09	
79872001129	JANET L KROMER LIV TRUST	\$2,489.37	\$1,460.09	\$1,460.09	\$1,460.09	
79872001145	MULHERN, THOMAS A & DONNA M	\$2,489.37	\$1,460.09	\$1,460.09	\$1,460.09	
79872001161	SOUTH HOLLAND TRUST AND	\$2,489.37	\$1,460.09	\$1,460.09	\$1,460.09	
79872001187	MINAI, JOSEPH MICHAEL	\$2,489.37	\$1,460.09	\$1,460.09	\$1,460.09	
79872001200	8640 CEDAR HAMMOCK CIRCLE	\$2,489.37	\$1,460.09	\$1,460.09	\$1,460.09	
79872001226	LOFTY, CHARLES	\$2,489.37	\$1,460.09	\$1,460.09	\$1,460.09	
79872001242	DUNAWAY, GARY & DONNA	\$2,489.37	\$1,460.09	\$1,460.09	\$1,460.09	
79872001268	SEBE, KENNETH R & CHARLOTTE R	\$2,489.37	\$1,460.09	\$1,460.09	\$1,460.09	
79872001284	PHYLLIS M SISTO REV TRUST	\$2,489.37	\$1,460.09	\$1,460.09	\$1,460.09	
79872001307	HEAFEY, BRIAN J & VIRGINIA B	\$2,489.37	\$1,460.09	\$1,460.09	\$1,460.09	
79872001323	SKRADSKI, THOMAS P & BETH E	\$2,489.37	\$1,460.09	\$1,460.09	\$1,460.09	
79872001349	CELLUCCI, JERRY A & EILEEN V	\$2,489.37	\$1,460.09	\$1,460.09	\$1,460.09	
79872001365	OOSTERBAAN, GREGORY & AMANDA	\$2,489.37	\$1,460.09	\$1,460.09	\$1,460.09	
79872001381	GILLESPIE, EDWARD F	\$2,489.37	\$1,460.09	\$1,460.09	\$1,460.09	
79872001404	BLISS JR, ROBERT S	\$2,489.37	\$1,460.09	\$1,460.09	\$1,460.09	
79872001420	MCSHANE JR, HAROLD	\$2,489.37	\$1,460.09	\$1,460.09	\$1,460.09	
79872001446	DECICCO, WILLIAM T & PATRICIA	\$2,489.37	\$1,460.09	\$1,460.09	\$1,460.09	
79872001462	GLIONNA, DAVID & MARY JO	\$2,489.37	\$1,460.09	\$1,460.09	\$1,460.09	
79872001488	HOWARD R SOLOMON REV TRUST	\$2,489.37	\$1,460.09	\$1,460.09	\$1,460.09	
79872001501	VAN NESS, ALAN H & SUZANNE P	\$2,489.37	\$1,460.09	\$1,460.09	\$1,460.09	
79872001527	STUDIER, BERNARD H & EVALYN M	\$2,489.37	\$1,460.09	\$1,460.09	\$1,460.09	
79872001543	SPEIKHOUT, JEAN H	\$2,489.37	\$1,460.09	\$1,460.09	\$1,460.09	
79872001569	FEE, JOHN F & CAROLYN J	\$2,489.37	\$1,460.09	\$1,460.09	\$1,460.09	
79872001585	MANTEGNA, JOSEPH J & VERLA R	\$2,489.37	\$1,460.09	\$1,460.09	\$1,460.09	
79872001608	BISHOP, JOHN E & BRENDA L	\$2,489.37	\$1,460.09	\$1,460.09	\$1,460.09	
79872001624	ABATECOLA, JOHN P	\$2,489.37	\$1,460.09	\$1,460.09	\$1,460.09	
79872001640	MURPHY, PATRICIA E	\$2,489.37	\$1,460.09	\$1,460.09	\$1,460.09	
79872001666	SCHWARTZ, THOMAS C	\$2,489.37	\$1,460.09	\$1,460.09	\$1,460.09	
79872001682	ERIC EISENBERG REV TRUST	\$2,489.37	\$1,460.09	\$1,460.09	\$1,460.09	
79872001705	BUCKLEY JR, FRANK R & EMILY S	\$2,489.37	\$1,460.09	\$1,460.09	\$1,460.09	
79872002021	MESOLELLA LIFE TERM TRUST	\$2,489.37	\$1,460.09	\$1,460.09	\$1,460.09	
79872002047	PETERS, JOHN M & CARRIE G	\$2,489.37	\$1,460.09	\$1,460.09	\$1,460.09	
79872002063	CHARLES J KROMER LIVING TRUST	\$2,489.37	\$1,460.09	\$1,460.09	\$1,460.09	
79872002089	ELLIOTT, STEPHEN K & AUDREY M	\$2,489.37	\$1,460.09	\$1,460.09	\$1,460.09	
79872002102	KROMER TR, CHARLES J & JANET	\$2,489.37	\$1,460.09	\$1,460.09	\$1,460.09	
79872002128	MEIGHEN, CHARLES OSBORNE	\$2,489.37	\$1,460.09	\$1,460.09	\$1,460.09	
79872002144	FAHIMI, HADI & MAHVASH	\$2,489.37	\$1,460.09	\$1,460.09	\$1,460.09	
79872002160	MICHAEL MAHONY REAL	\$2,489.37	\$1,460.09	\$1,460.09	\$1,460.09	
79872002186	MARY ANN COLLINS TRUST	\$2,489.37	\$1,460.09	\$1,460.09	\$1,460.09	
79872002209	VAN DYKE, WILLIAM P & CAROL A	\$2,489.37	\$1,460.09	\$1,460.09	\$1,460.09	
79872002225	FIDDLER, RICHARD D & SUSAN E	\$2,489.37	\$1,460.09	\$1,460.09	\$1,460.09	
79872002241	PAULA A KEEFE 2011 TRUST	\$2,489.37	\$1,460.09	\$1,460.09	\$1,460.09	
79872002267	DONALD F RINKE TRUST	\$2,489.37	\$1,460.09	\$1,460.09	\$1,460.09	

Parcel ID	Owner	Direct Bill	Tax Collector Assessment Roll			
		2018-2019	2019-2020	2020-2021	2021-2022	
79872002283	KNOX, PETER D	\$2,489.37	\$1,460.09	\$1,460.09	\$1,460.09	
79872002306	ROSS, ARTHUR & TERRY	\$2,489.37	\$1,460.09	\$1,460.09	\$1,460.09	
79872002322	SCOCOZZA, WALDO D	\$2,489.37	\$1,460.09	\$1,460.09	\$1,460.09	
79872002348	SAMANCHIK, PAUL P & CAROLYN A	\$2,489.37	\$1,460.09	\$1,460.09	\$1,460.09	
79872002364	JASILLI, KENNETH & CATHERINE	\$2,489.37	\$1,460.09	\$1,460.09	\$1,460.09	
79872002380	BURDI FLORIDA IRREV TRUST	\$2,489.37	\$1,460.09	\$1,460.09	\$1,460.09	
79872002403	PALLAGI, SHAWN J & JAYME H	\$2,489.37	\$1,460.09	\$1,460.09	\$1,460.09	
79872002429	TYRRELL TR, FELICITA F	\$2,489.37	\$1,460.09	\$1,460.09	\$1,460.09	
79872002445	COYLE FAMILY IRREV TRUST	\$2,489.37	\$1,460.09	\$1,460.09	\$1,460.09	
79872002461	AYRES, JOHN S & SALLY R	\$2,489.37	\$1,460.09	\$1,460.09	\$1,460.09	
79872002487	PATRICK JR, ROBERT A	\$2,489.37	\$1,460.09	\$1,460.09	\$1,460.09	
79872002500	VERN A MOTOLA TRUST	\$2,489.37	\$1,460.09	\$1,460.09	\$1,460.09	
79872002526	BETTY JEAN HOLTON LIVING TRUST	\$2,489.37	\$1,460.09	\$1,460.09	\$1,460.09	
79872002542	HRABUSICKY, LARRY & CHERYL	\$2,489.37	\$1,460.09	\$1,460.09	\$1,460.09	
79872002568	EUGENE DILLING REV TRUST	\$2,489.37	\$1,460.09	\$1,460.09	\$1,460.09	
79872002584	GROVER, RONALD C & KAREN S	\$2,489.37	\$1,460.09	\$1,460.09	\$1,460.09	
79872002607	CHARLES L STREB REV TRUST	\$2,489.37	\$1,460.09	\$1,460.09	\$1,460.09	
79872002623	TOM H MOORE DEC OF TRUST	\$2,489.37	\$1,460.09	\$1,460.09	\$1,460.09	
79872002649	DEGAZIO TR, HEATHER ELAINE	\$2,489.37	\$1,460.09	\$1,460.09	\$1,460.09	
79872002665	PLOTNER, JAMES F & JANET	\$2,489.37	\$1,460.09	\$1,460.09	\$1,460.09	
79872002681	HICKERSON, STUART G & ANGELA J	\$2,489.37	\$1,460.09	\$1,460.09	\$1,460.09	
79872002704	MANCUSO JR, ERNEST & LUCILLE	\$2,489.37	\$1,460.09	\$1,460.09	\$1,460.09	
79872002720	SAVOIE, STEPHEN P & SANDRA L	\$2,489.37	\$1,460.09	\$1,460.09	\$1,460.09	
79872002746	MUELLER, CHRISTOPHER J	\$2,489.37	\$1,460.09	\$1,460.09	\$1,460.09	
79872002762	MULCAHY, WILLIAM & SANDRA C	\$2,489.37	\$1,460.09	\$1,460.09	\$1,460.09	
79872002788	WEAKLY FAMILY LAND TRUST	\$2,489.37	\$1,460.09	\$1,460.09	\$1,460.09	
79872002801	SOLDAN, THOMAS D & MARY K	\$2,489.37	\$1,460.09	\$1,460.09	\$1,460.09	
79872002827	DALE, BETTE	\$2,489.37	\$1,460.09	\$1,460.09	\$1,460.09	
79872002843	STRAUB, JAY M & NANCY F	\$2,489.37	\$1,460.09	\$1,460.09	\$1,460.09	
79872002869	HEVEY, NORMAN R & ELAINE A	\$2,489.37	\$1,460.09	\$1,460.09	\$1,460.09	
79872002885	CARRIER, MARK L & SUSAN M	\$2,489.37	\$1,460.09	\$1,460.09	\$1,460.09	
79872002908	WILLIAM P MCSHANE LIV TRUST	\$2,489.37	\$1,460.09	\$1,460.09	\$1,460.09	
79872002924	MCNEILL, MICHAEL K & DEBORAH A	\$2,489.37	\$1,460.09	\$1,460.09	\$1,460.09	
79872002940	PRESTON, E DONALD & PHYLLIS J	\$2,489.37	\$1,460.09	\$1,460.09	\$1,460.09	
79872002966	PAUL F BRADLEY FAMILY LV TRUST	\$2,489.37	\$1,460.09	\$1,460.09	\$1,460.09	
79872004029	DONLIN, SUSAN	\$2,489.37	\$1,460.09	\$1,460.09	\$1,460.09	
79872004045	INKS, MICHAEL T & PATRICIA L	\$2,489.37	\$1,460.09	\$1,460.09	\$1,460.09	
79872004061	OLEARY, JOHN P & KATHLEEN M	\$2,489.37	\$1,460.09	\$1,460.09	\$1,460.09	
79872004087	SINGLETON, HOWARD W & DONNA J	\$2,489.37	\$1,460.09	\$1,460.09	\$1,460.09	
79872004100	KIMBERLY K LEE REV TRUST	\$2,489.37	\$1,460.09	\$1,460.09	\$1,460.09	
79872004126	DALMET FARMS HOLDINGS USA LLLP	\$2,489.37	\$1,460.09	\$1,460.09	\$1,460.09	
79872004142	DIANE M DAUGHENBAUGH TRUST	\$2,489.37	\$1,460.09	\$1,460.09	\$1,460.09	
79872004168	ROBINSON, JAMES & MARIANNE	\$2,489.37	\$1,460.09	\$1,460.09	\$1,460.09	
79872004184	CIAMPA, FRANCIS A & SHEILA F	\$2,489.37	\$1,460.09	\$1,460.09	\$1,460.09	
79872004207	PASQUALONI, JOHN A & THERESE C	\$2,489.37	\$1,460.09	\$1,460.09	\$1,460.09	
79872004223	3665 BUTTONWOOD LLC	\$2,489.37	\$1,460.09	\$1,460.09	\$1,460.09	
79872004249	ONEILL, ROBERT V & LORRAINE A	\$2,489.37	\$1,460.09	\$1,460.09	\$1,460.09	
79872004265	MAZUR, ANTOINETTE V	\$2,489.37	\$1,460.09	\$1,460.09	\$1,460.09	
79872004281	DAVIS, GILBERT M & SUSAN R	\$2,489.37	\$1,460.09	\$1,460.09	\$1,460.09	
79872004304	PESKIND FAMILY LTD PARTNERSHIP	\$2,489.37	\$1,460.09	\$1,460.09	\$1,460.09	
79872004320	PHIIP W CASTER REV TRUST	\$2,489.37	\$1,460.09	\$1,460.09	\$1,460.09	
79872004346	HOZIAN, ALLEN M & MARY ANN	\$2,489.37	\$1,460.09	\$1,460.09	\$1,460.09	
79872004362	OWEN, SUSAN	\$2,489.37	\$1,460.09	\$1,460.09	\$1,460.09	
79872004388	KLUEVER, JAMES E	\$2,489.37	\$1,460.09	\$1,460.09	\$1,460.09	
79872004401	JOHN E WRAY TRUST	\$2,489.37	\$1,460.09	\$1,460.09	\$1,460.09	
79872004427	KENNEY, BARBARA P & MICHAEL R	\$2,489.37	\$1,460.09	\$1,460.09	\$1,460.09	
79872004443	RAYMOND M ENGLAND TRUST	\$2,489.37	\$1,460.09	\$1,460.09	\$1,460.09	
79872004469	SHEDLOCK, EMMANUEL M	\$2,489.37	\$1,460.09	\$1,460.09	\$1,460.09	
79872004485	HULME TR, FRANK C & JANIS N	\$2,489.37	\$1,460.09	\$1,460.09	\$1,460.09	
79872004508	MARESCA, FRANK LOUIS	\$2,489.37	\$1,460.09	\$1,460.09	\$1,460.09	
79872004524	SAGER, JEFFREY R	\$2,489.37	\$1,460.09	\$1,460.09	\$1,460.09	
79872004540	ROBERT B PORTER LIV TRUST	\$2,489.37	\$1,460.09	\$1,460.09	\$1,460.09	
79872004566	JANCZEWSKI, JANET L	\$2,489.37	\$1,460.09	\$1,460.09	\$1,460.09	
79872004582	GRAHAM, SAMUEL L	\$2,489.37	\$1,460.09	\$1,460.09	\$1,460.09	
79872004605	AHITOW, RODNEY J & MARY K	\$2,489.37	\$1,460.09	\$1,460.09	\$1,460.09	

Parcel ID	Owner	Direct Bill	Tax Collector Assessment Roll			
		2018-2019	2019-2020	2020-2021	2021-2022	
79872004621	PETER B HOGERTON TRUST	\$2,489.37	\$1,460.09	\$1,460.09	\$1,460.09	
79872004647	SOMMERS, TODD J & JENNIFER	\$2,489.37	\$1,460.09	\$1,460.09	\$1,460.09	
79872004663	R R & K S HAHN LIV TRUST	\$2,489.37	\$1,460.09	\$1,460.09	\$1,460.09	
79872004689	BANNASCH, GERALD J	\$2,489.37	\$1,460.09	\$1,460.09	\$1,460.09	
79872004702	TOWNSEND, JEFFREY & JAN	\$2,489.37	\$1,460.09	\$1,460.09	\$1,460.09	
79872004728	DINELLO, ALESSANDRO P	\$2,489.37	\$1,460.09	\$1,460.09	\$1,460.09	
79872004744	MARKOFF, TIMOTHY P	\$2,489.37	\$1,460.09	\$1,460.09	\$1,460.09	
79872004760	BUONOMO, THOMAS & DONNA	\$2,489.37	\$1,460.09	\$1,460.09	\$1,460.09	
79872004786	WILLIAM W WOODS TRUST	\$2,489.37	\$1,460.09	\$1,460.09	\$1,460.09	
79872004809	AYLWARD, RICHARD G & MARY C	\$2,489.37	\$1,460.09	\$1,460.09	\$1,460.09	
79872004825	MILLER, BEVERLY E	\$2,489.37	\$1,460.09	\$1,460.09	\$1,460.09	
79872004841	KEVIN J OLIVER REV TRUST	\$2,489.37	\$1,460.09	\$1,460.09	\$1,460.09	
79872004867	MASTROIANNI, ANTHONY J	\$2,489.37	\$1,460.09	\$1,460.09	\$1,460.09	
79872004883	CONNOLLY, THOMAS E & LESLEY M	\$2,489.37	\$1,460.09	\$1,460.09	\$1,460.09	
79872004906	NEWBERT TR, THOMAS & JOANNE C	\$2,489.37	\$1,460.09	\$1,460.09	\$1,460.09	
79872004922	SCHWARZ, WALTER H & SUSAN L	\$2,489.37	\$1,460.09	\$1,460.09	\$1,460.09	
79872004948	SMITH, JO ANN R	\$2,489.37	\$1,460.09	\$1,460.09	\$1,460.09	
79872004964	SERRECCHIA, JOSEPH F & MAUREEN	\$2,489.37	\$1,460.09	\$1,460.09	\$1,460.09	
79872060021	SALEM TR, SAMUEL J & PAULA L	\$2,489.37	\$1,460.09	\$1,460.09	\$1,460.09	
79872060047	DAVID A DECKLEVER & DARLENE F	\$2,489.37	\$1,460.09	\$1,460.09	\$1,460.09	
79872060063	BAXTER, JAMES C & JEAN A	\$2,489.37	\$1,460.09	\$1,460.09	\$1,460.09	
79872060089	MURRAY, DAVID & MARGARET	\$2,489.37	\$1,460.09	\$1,460.09	\$1,460.09	
79872060102	ROE, MARK R & ROBYN	\$2,489.37	\$1,460.09	\$1,460.09	\$1,460.09	
79872060128	ESPOSITO, STEVEN L	\$2,489.37	\$1,460.09	\$1,460.09	\$1,460.09	
79872060144	WINIFRED A PRESTON REV TRUST	\$2,489.37	\$1,460.09	\$1,460.09	\$1,460.09	
79872060160	DAWALD, TIMOTHY J & JOAN M	\$2,489.37	\$1,460.09	\$1,460.09	\$1,460.09	
79872060186	NEWBAUER JR, WILLIAM E	\$2,489.37	\$1,460.09	\$1,460.09	\$1,460.09	
79872060209	COX REVOCABLE TRUST	\$2,489.37	\$1,460.09	\$1,460.09	\$1,460.09	
79872060225	MARTINO, JOHN J	\$2,489.37	\$1,460.09	\$1,460.09	\$1,460.09	
79872060241	ELIZABETH M ENGLISH TRUST 2008	\$2,489.37	\$1,460.09	\$1,460.09	\$1,460.09	
79872060267	BIANCO, BARRY L & MARCIA B	\$2,489.37	\$1,460.09	\$1,460.09	\$1,460.09	
79872060283	JAHN, ROBERT E & SALLY A	\$2,489.37	\$1,460.09	\$1,460.09	\$1,460.09	
79872060306	HAGUE, ROBERT DOUGLAS	\$2,489.37	\$1,460.09	\$1,460.09	\$1,460.09	
79872060322	SCHEUERMANN, LARRY E & MARY P	\$2,489.37	\$1,460.09	\$1,460.09	\$1,460.09	
79872060348	HESS, THOMAS C & RONNIE F	\$2,489.37	\$1,460.09	\$1,460.09	\$1,460.09	
79872060364	BOOTH, HOWARD D & DIANE L	\$2,489.37	\$1,460.09	\$1,460.09	\$1,460.09	
79872060380	JOHNSON, RICHARD F & NANCY L	\$2,489.37	\$1,460.09	\$1,460.09	\$1,460.09	
79872060403	GILLMO, LENNART	\$2,489.37	\$1,460.09	\$1,460.09	\$1,460.09	
79872060429	FRANCIS, NADINE	\$2,489.37	\$1,460.09	\$1,460.09	\$1,460.09	
79872060445	CIRRITO, ERNEST & JANIS L	\$2,489.37	\$1,460.09	\$1,460.09	\$1,460.09	
79872060461	GRILL, KARL L	\$2,489.37	\$1,460.09	\$1,460.09	\$1,460.09	
79872060487	DRUMMEY, WILLIAM J	\$2,489.37	\$1,460.09	\$1,460.09	\$1,460.09	
79872060500	1394888 ONTARIO LTD	\$2,489.37	\$1,460.09	\$1,460.09	\$1,460.09	
79872060526	NOVOSEL, MICHAEL T	\$2,489.37	\$1,460.09	\$1,460.09	\$1,460.09	
79872060542	DRAPEAU SR, NORMAN E	\$2,489.37	\$1,460.09	\$1,460.09	\$1,460.09	
79872060568	SCHWARZ, MICHAEL F	\$2,489.37	\$1,460.09	\$1,460.09	\$1,460.09	
79872060584	ALLEN FAMILY 2012 LIV TRUST	\$2,489.37	\$1,460.09	\$1,460.09	\$1,460.09	
79872060607	BANNASCH, JAMES & LISA	\$2,489.37	\$1,460.09	\$1,460.09	\$1,460.09	
79872060623	REISER, CHRISTOPHER	\$2,489.37	\$1,460.09	\$1,460.09	\$1,460.09	
79872060649	BOWMAN 2000 LLC	\$2,489.37	\$1,460.09	\$1,460.09	\$1,460.09	
79872060665	MAUREEN B MACNEIL REV TRUST	\$2,489.37	\$1,460.09	\$1,460.09	\$1,460.09	
79872060681	CREAN, MARY A	\$2,489.37	\$1,460.09	\$1,460.09	\$1,460.09	
79872060704	HLUSKA, SONJA	\$2,489.37	\$1,460.09	\$1,460.09	\$1,460.09	
79872060720	BELT, JAMES J & CLAUDIA M	\$2,489.37	\$1,460.09	\$1,460.09	\$1,460.09	
79872060746	SEEBOLD TR, WILLIAM H	\$2,489.37	\$1,460.09	\$1,460.09	\$1,460.09	
79872060762	COCHRAN PARADISE PROPERTY LLC	\$2,489.37	\$1,460.09	\$1,460.09	\$1,460.09	
79872060788	LYNNE J ROMITO REV TRUST	\$2,489.37	\$1,460.09	\$1,460.09	\$1,460.09	
79872060801	STEPHEN M SCHLEICHER TRUST	\$2,489.37	\$1,460.09	\$1,460.09	\$1,460.09	
79872060827	1394888 ONTARIO LTD	\$2,489.37	\$1,460.09	\$1,460.09	\$1,460.09	
79872060843	CHARLES A YOUNG III REV TRUST	\$2,489.37	\$1,460.09	\$1,460.09	\$1,460.09	
79872060869	DENISE PINSKY 2003 TRUST	\$2,489.37	\$1,460.09	\$1,460.09	\$1,460.09	
79872060885	DRISCOLL, GERALD M	\$2,489.37	\$1,460.09	\$1,460.09	\$1,460.09	
79872060908	MARCHANT, JAMES C	\$2,489.37	\$1,460.09	\$1,460.09	\$1,460.09	
79872060924	SHEDLOCK, FRANK & NANCY	\$2,489.37	\$1,460.09	\$1,460.09	\$1,460.09	
79872060940	MCCONVILLE, JOHN J	\$2,489.37	\$1,460.09	\$1,460.09	\$1,460.09	

Parcel ID	Owner	Direct Bill	Tax Collector Assessment Roll			
		<u>2018-2019</u>	<u>2019-2020</u>	<u>2020-2021</u>	<u>2021-2022</u>	
79872060966	KEITH & NANCY BRUNELLI TRUST	\$2,489.37	\$1,460.09	\$1,460.09	\$1,460.09	
79872100020	FALLON, JOHN F & ROSE A	\$2,489.37	\$1,460.09	\$1,460.09	\$1,460.09	
79872100046	THOMAS, BYRON C & PAULINE R	\$2,489.37	\$1,460.09	\$1,460.09	\$1,460.09	
79872100062	POLLIO, MICHAEL & FLORENCE	\$2,489.37	\$1,460.09	\$1,460.09	\$1,460.09	
79872100088	JEAN C INMAN REVOCABLE TRUST	\$2,489.37	\$1,460.09	\$1,460.09	\$1,460.09	
79872100101	PITTS, CORNELIUS & MILDRED	\$2,489.37	\$1,460.09	\$1,460.09	\$1,460.09	
79872100127	JAMALI, ANMAR AL & CAROL A	\$2,489.37	\$1,460.09	\$1,460.09	\$1,460.09	
79872100143	BANNO, NANCY L	\$2,489.37	\$1,460.09	\$1,460.09	\$1,460.09	
79872100169	COX JR, JOEL M & COLLEEN W	\$2,489.37	\$1,460.09	\$1,460.09	\$1,460.09	
79872100185	MARINELLI, JEANNE & NOE	\$2,489.37	\$1,460.09	\$1,460.09	\$1,460.09	
79872100208	EDGERTON, GERALD A & SUSAN K	\$2,489.37	\$1,460.09	\$1,460.09	\$1,460.09	
79872100224	SMITH, EDWARD F	\$2,489.37	\$1,460.09	\$1,460.09	\$1,460.09	
79872100240	ROTH, TOBY A & JEANNE M	\$2,489.37	\$1,460.09	\$1,460.09	\$1,460.09	
79872100266	VELLENGA TR, DANIEL R	\$2,489.37	\$1,460.09	\$1,460.09	\$1,460.09	
79872100282	MAGLIULO, EDWARD	\$2,489.37	\$1,460.09	\$1,460.09	\$1,460.09	
79872100305	MEAL, RONALD & BARBARA	\$2,489.37	\$1,460.09	\$1,460.09	\$1,460.09	
79872100321	HUNEGS INVESTMENTS LLC	\$2,489.37	\$1,460.09	\$1,460.09	\$1,460.09	
79872100347	URBON, ROBERT J & ANNE E	\$2,489.37	\$1,460.09	\$1,460.09	\$1,460.09	
79872100363	DAHL, DAVID D	\$2,489.37	\$1,460.09	\$1,460.09	\$1,460.09	
79872100389	PROIA, FREDERICK	\$2,489.37	\$1,460.09	\$1,460.09	\$1,460.09	
79872100402	GEROLD JR, ROY G	\$2,489.37	\$1,460.09	\$1,460.09	\$1,460.09	
79872100428	GEROLAMO FMY NOMINEE TRUST	\$2,489.37	\$1,460.09	\$1,460.09	\$1,460.09	
79872100444	MCGEE JR, JOSEPH J	\$2,489.37	\$1,460.09	\$1,460.09	\$1,460.09	
79872100460	LEVIN, MARK J & BRENDA A	\$2,489.37	\$1,460.09	\$1,460.09	\$1,460.09	
79872100486	GANNON, MARY F	\$2,489.37	\$1,460.09	\$1,460.09	\$1,460.09	
Total		\$1,989,009.37	\$1,166,612.97	\$1,166,670.97	\$1,166,612.97	